

HANDCASE

VIRTUAL FINANCE USER MANUAL

This manual is intuitive as our software, is enough to observe the images to understand as to use best of and the more efficient form. The screens follow the logical order of the presentation them tools in the interface of each software.

Virtual Finance

Software for organizing and calculating (automatic calculation) costs, revenues and investments. You organize your expenses, revenues and investments for items and modes, mark time and date to be advised of payment, receipt or investment to be made or redeemed. also has ratings tool where you define what you did or should do about their personal financial activities, professional or your company (useful for micro and small enterprises as a complement mobile) and notes.

1.0 – For all models with Palm System (ram 193 KB)

Install

Just unpacking the zip on the desktop and give a double click the file **Virtual Finance_eng.prc** the tool installation of your Palm will open showing the file being synchronized, synchronize and ready.



You recognize by the icon on the side.

Start Interface



Here you have the interface which displays all the entries that register and organize the display and automatic calculation by mode (expense, revenue and investment).

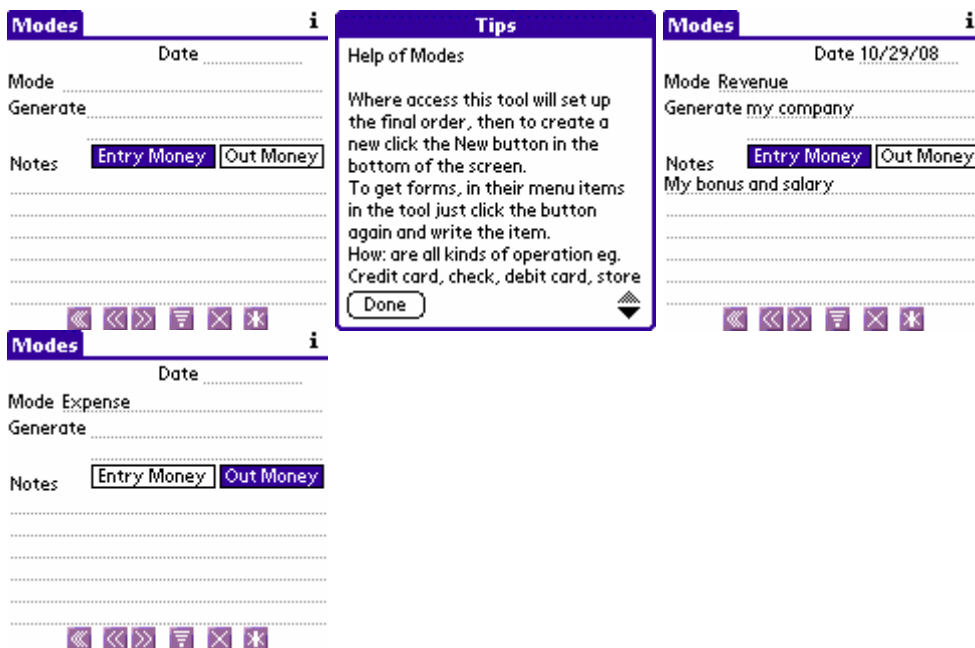


Here you can copy and paste using the pull-down menus. Eg. [Memopad copy of the edited items that Memopad of PalmDesktop and vice versa.](#) In the second screen you see the drop-down menu flash fast and direct access to the tools of the standard Palm. Useful to go to the memos and return directly to the Virtual Finance when copying and pasting.

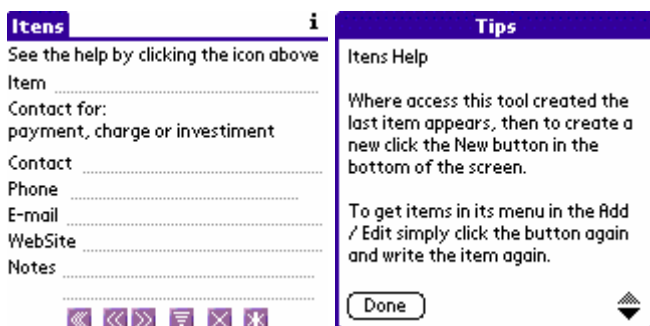
The help is present in all the tools so when you have enough consultation doubt it without:having to open it manually. The specific help of the tool you access via the icon (i) in the top right of your screen.



In the screens above you edit the entry of each order and item. The specific help of the tool you access via the icon (i) in the top right of your screen.



In the screens above you register the modes (revenue, expense, investment and others, but it is important to devise ways of calculating estimable on-screen eg on the screen you choose to calculate the drop-down menu the way, say all costs and expenses are listed and calculated automatically, this applies to all income and all investments, then create a way to keep in mind that it will generate a list and calculate total for that order) the specific help you access the tool via the icon (i) in the top right the screen.



In the screens above you up every kind of item that bind after the event. Eg dinner is an item of expenditure so, commission or salary, are items the way revenue, or savings and stock items are the way investment. The specific help of the tool you access via the icon (i) in the top right of your screen.

Add / Edit i

Modes: All (New)

Items: Revenue (New)

Objective: Expense

Expense Investment

Revenue Value \$

Notes

Warn

Add / Edit i

Modes: Revenue (New)

Items: All (New)

Objective: Bonus

Expense Investment

Revenue Value \$

Notes

Warn

Add / Edit i

Modes: Revenue (New)

Items: Bonus (New)

Objective: Revenue

Expense Investment

Revenue Value \$ **1.000**

Notes

Warn

Add / Edit i

Modes: Revenue (New)

Items: Salary (New)

Objective: Revenue

Expense Investment

Revenue Value \$ **700**

Notes

Warn

Virtual Finance i

All

Revenue

Expense

Investment

Virtual Finance i

Revenue

Revenue 1000

Revenue 700

Add / Edit i

Modes: Expense (New)

Items: All (New)

Objective: Bonus

Expense Investment

Revenue Value \$ **1000**

Notes

Warn

Add / Edit i

Modes: Expense (New)

Items: Car payment (New)

Objective: Expense

Expense Investment

Revenue Value \$ **245**

Notes

Warn

Add / Edit i

Modes: Expense (New)

Items: All (New)

Objective: Bonus

Expense Investment

Trip Value \$ **1000**

Notes

Warn

Add / Edit i

Modes: Expense (New)

Items: Trip (New)

Objective: Expense

Expense Investment

Revenue Value \$ **670**

Notes

Warn

Virtual Finance i

All

Revenue

Expense

Investment

Virtual Finance i

Expense

Expense 670

Expense 245

Add / Edit i

Modes: Investment (New)

Items: Gold (New)

Objective: Investment

Expense Investment

Revenue Value \$ **2400**

Notes

Warn

Add / Edit i

Modes: Investment (New)

Items: Stocks (New)

Objective: Investment

Expense Investment

Revenue Value \$ **450**

Notes

Warn

Virtual Finance i

All

Revenue

Expense

Investment

Virtual Finance i

Investm 2400

Investm 450

HANDCASE Analysis Add

For calculate click on side **2850**

Virtual Finance i

Expense

HANDCASE Analysis Add

For calculate click on side **245**

Virtual Finance i

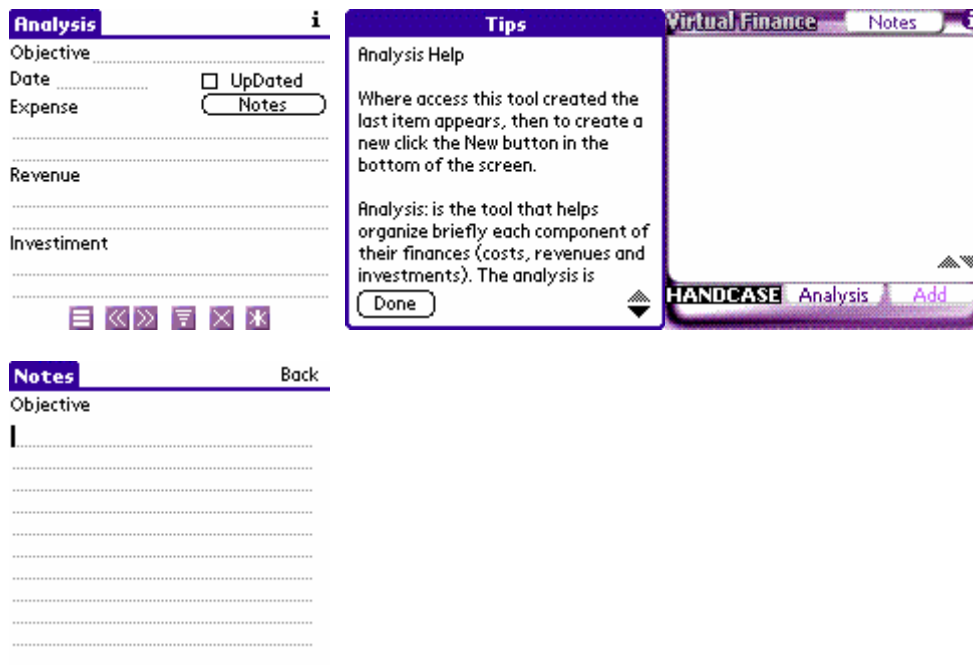
Expense

Expense 915

HANDCASE Analysis Add

For calculate click on side **915**

In the screens above you is the final edition, which is already created ways and items, just select each and added values, define the goal, set the date (you will be notified of the payment, receipt or purchase application). In some cases such as the last screen above, investment costs may be (part of the house itself). The specific help of the tool you access via the icon (i) in the top right of your screen. In the screens above you can view and automatically calculate the costs, revenues and investments, simply choose the pulldown menu in order to be calculated (expenses, income or investment) The specific help of the tool you access via the icon (i) in the top right of screen.



In the screens above you can view and edit reviews that could serve as a tool of goals. Tracks still a note associated evaluations. The specific help of the tool you access via the icon (i) in the top right of your screen.

Any problem with the Software please contact HANDCASE suporte@handycase.com

Access: www.handycase.com/eng

© 2007/2008 Copyright by HANDCASE