

HANDCASE

SAVE MEM USER MANUAL

This manual is intuitive as our software, is enough to observe the images to understand as to use best of and the more efficient form. The screens follow the logical order of the presentation them tools in the interface of each software.

Descriptive

Save Mem is a memory manager. It works integrated with the memory card to which you move applications and games, (for security applications are not natives of rom viewed), creating direct links in the palm launcher. Each 100 kb turn 1 kb in Palm. It saves you the Palm internal memory running heavy games, readers of PDF and all major applications directly from memory card.

1.0 - For all models with Palm System with card reader support (ram 109 KB)

Requeriments

memory card reader and card

Important: It only functions in palms with support the SD memory card.

Install

Just unpacking the zip on the desktop and give a double click the file **savemem.prc** the tool installation of your Palm will open showing the file being synchronized, synchronize and ready.



You recognize by the icon on the side.

Initial Interface



Here you have the interface of the Save Mem through it you can move to the card, erase the palm, and on the card, browse the lists of both the palm and the card among other features.

Obs.: What you already installed in the previous card the installation will not read. So that it reads softwares or games already installed in the card you need you move them for palm, there to open the SaveMem and moves them for the card again. Because it does not read the content of the card that previously was placed? Because it manages for folders created and managed by it. There it creates links of the programs and games in its launcher.

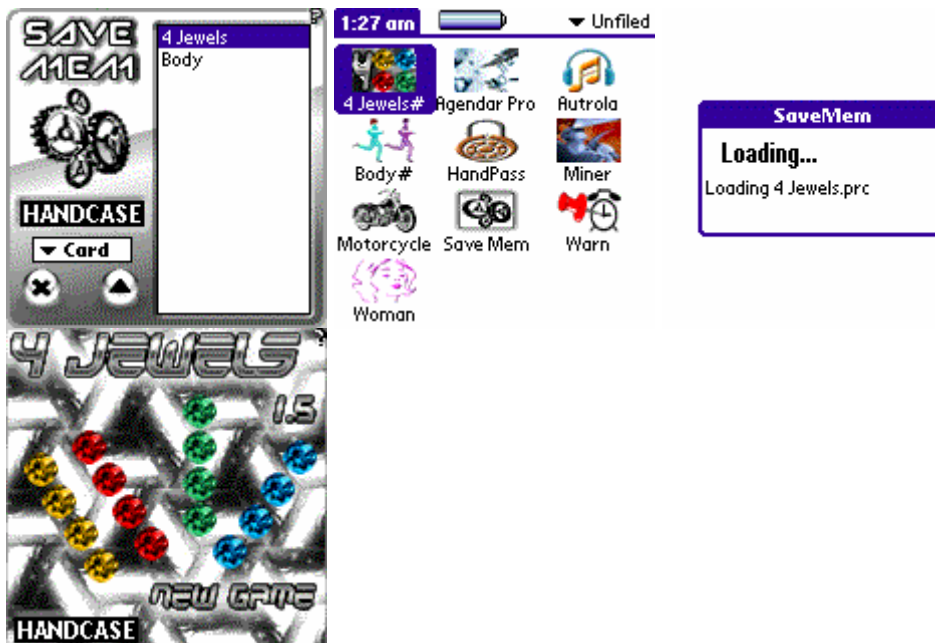


Note the two screens above. The first shows the applications that have already been installed on your palm and the icon of the Save Memory In the second screen Save Mem open, note that those applications of the first screen does not appear on the List and Save Mem know why not come? For safety, so you do not accidentally delete or move any of them. He will read only what you install on palm.

Look the screens above. In the first place the programs and games. In the second trigger the Save Mem List shows and everything that was installed in the palm.



On the screen above you see the dropdown menu driven to choose one of the options (or palm card) in the Save Mem List shows what this or the palm or the card installed for him.



Note the screens above. In the first place the programs and games. In the second triggered after



the Mem Save and select one of the programs and games on the List, click on to move to the card or back to Palm. Please note the programs and games are already on the card and you can access them from your palm, note that they have a # is next to the identification of

links that are and are physically in freeing memory card from your palm. In the second triggered after the Save and select the option Mem Card List displays the contents organized on the card.

Note: What you've installed the card before you install the Save Mem he will read not. For that he read the applications already installed on the card you need to move them to your palm, then open the Save Mem and moves them back to the card. Because he does not read oo contents of the card that was previously placed? Because he manages in folders created and managed by him. Then it creates links the programs and games on their launch.



To erase the card simply select the program or game and click on



On the screen above you through the pulldown menu has the option to also update the contents of the memory card.



In the initial interface of the Save Mem you get with the help icon for basic (?) in the top right of your screen.

Obs.: What you already installed in the previous card the installation will not read. So that it reads softwares or games already installed in the card you need you move them for palm, there to open the SaveMem and moves them for the card again. Because it does not read the content of the card that previously was placed? Because it manages for folders created and managed by it. There it creates links of the programs and games in its launcher.

Any problem with the Software please contact HANDCASE suporte@handycase.com

Access: www.handycase.com/eng

© 2007/2008 Copyright by HANDCASE