

HANDCASE

PLANTING USER MANUAL

This manual is intuitive as our softwares, it is enough to observe the images to understand as using in the best and more efficient way. The screens follow the logical order of the presentation of the tools in the interface of each software.

Descriptive

Suite of 15 tools. It is easy to organize and manage information on their plantations, or third parties. For the largest companies serves as a complement mobile and updated. Structured in Planning, Pulverization, History, Costs, Cultivations, Benefit, Harvest, Planting, Weather, Fertilization, Irrigation, Management, Sales, Reports, Silage and Notes.

1.0 - For all models with Palm System (ram 134 KB)

If you received the program for e-mail, unzip is enough the zip in the desktop and to give a double click in the file **Planting.prc** the tool of installation of your Palm will open presenting the file to be synchronized, synchronize and ready or in the next synchronization he will be installed.

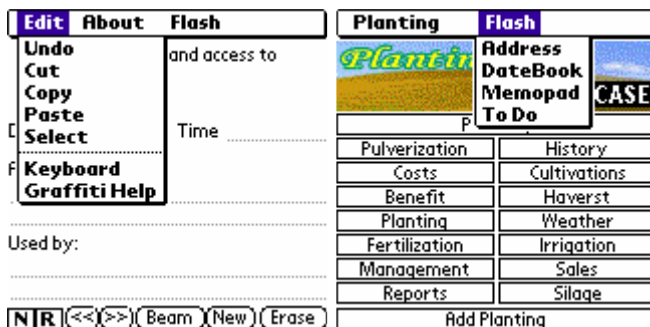


You will recognize it for the icon to the side.

Initial Interface



Here you choose the tool that is going to use.



Menu standard, sufficiency copy of the other tools (as the Memos, Expenses and the Task of the Palm) and bonds in the HandHerd information and vice versa. In the second screen you see the menu Flash that gives straight access the tools standard of the Palm and go back directly for Planting.

Access Main
Customize the use and access to
Planting

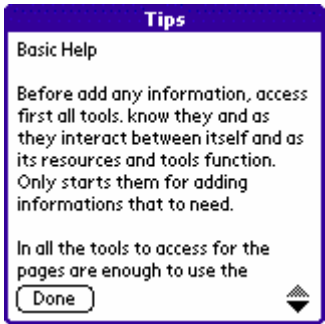
Date Time

Authorized by:
.....

Used by:
.....

NIR (<<) (>>) (Beam) (New) (Erase)

Here you configure the access software.



Here you access the basic help, by the "i" icon at the top of the initial screen.

Add Planting Main

Cultivations |

Date Time

Type

Code Year

Category

Descriptive

In Rotation In Study

NIR (<<) (>>) (Beam) (New) (Erase)

Here you add the data from planting to consultation and information. Binds the cultivation of all tools.

History Main

Cultivations ▼

Date Time

Product Volume | Grain/Plant

Diary Weekly Monthly

Goal Reached

Increase Production in

Decrease Production in

.....

Inform Updating

Updated

NIR (<<) (>>) (Beam) (New) (Erase)

Here you organize the information in the history of production by planting.

Costs Main

Cultivations ▼

Checked in

Type

Summary

Items

..... \$

..... \$

..... \$

NIR (<<) (>>) (Beam) (New) (Erase)

Here you organize costs by planting.

Report Main

Cultivations ▼

Date Time

Subject |

Report

.....

.....

.....

Inform Report Sending

Concluded

R << >> Beam New Erase

Here you will prepare reports for each planting. And any tool to access the reports via the **R** button on the base of tools.

Harvest Main

Cultivations ▼

Type

Date Time

Lot# Field

Volume Total

Notes

.....

Warn Update

.....

R << >> Beam New Erase

Here you organize the information of harvests, planting by planting.

Planting Main

Cultivations ▼

Date Time

Type

Lot# Volume

Details

.....

Manager

Replanting Warn Planting

New Planting

Hydroponic

R << >> Beam New Erase

Here you organize the information for each planting.

Weather Main

Cultivations ▼

Date Time

Season |

Weather Conditions

Rain

Sun

Frost

Dry

Note

.....

R << >> Beam New Erase

Here you organize the information of weather, by planting planting. Can with them, establish standards for registered weather for consultation.

Fertilization Main

Cultivations ▼

Type |

Date until

Time until

Way

Schedule Activities

.....

Canceled Confirmed

DIR << >> Beam New Erase

Here you organize the information for fertilization, planting by planting.

<p>Irrigation Main</p> <p>Cultivations ▼</p> <p>Date Time</p> <p>Features</p> <p>.....</p> <p>Details Irrigation Time</p> <p>.....</p> <p>New Irrigation Date Time</p> <p>NIR << >> Beam New Erase</p>	<p>Irrigation Main</p> <p>Cultivations ▼</p> <p>Date Time</p> <p>Features</p> <p>.....</p> <p>Complement ▼</p> <p>Dry Irrigation Time</p> <p>Details</p> <p>New Irrigation Date Time</p> <p>NIR << >> Beam New Erase</p>	<p>Irrigation Main</p> <p>Cultivations ▼</p> <p>Date Time</p> <p>Features</p> <p>.....</p> <p>Details Spraying Continues ▼</p> <p>Conventional Spraying</p> <p>Drip</p> <p>Exudate Irrigation</p> <p>Micro-Sprinkler</p> <p>Nebulization</p> <p>New Irrigation Time</p> <p>NIR << >> Beam New Erase</p>
--	---	--

In these screens you organize the information on the new irrigation schedule and irrigation, planting by planting.

Management Main

Cultivations ▼

Date Time

Lot# Field

Type

Tasks

.....

Warn Replacement

Updated

NIR << >> Beam New Erase

Here you organize the information on management, planting by planting.

Sales Main

Cultivations ▼

Date Time

Volume |

Client

Details

.....

\$

Verify Logistics Done Delivery

Inform Delivery Date

NIR << >> Beam New Erase

Here you organize the information sales of harvests for planting.

Silage Main

Cultivations ▼

Date Time

Type

.....

Volume

Silage Conditions

.....

UpDated Checked

NIR << >> Beam New Erase

Here you organize information for silage, planting by planting.

Subject |

Date

.....
.....
.....
.....
.....
.....
.....

<< >> Beam New Erase

Here you organize information and notes of the day to day of your planting. And any tool to access the reports via the **N** button on the base of tools.

Any problem with the Software contact HANDCASE suporte@handycase.com

Access: www.handycase.com/eng

© 2005/09 Copyright by HANDCASE