

# HANDCASE

## HANDTEST USER MANUAL

This manual is intuitive as our software, is enough to observe the images to understand as to use best of and the more efficient form. The screens follow the logical order of the presentation them tools in the interface of each software.

### Descriptive

This software was developed to assist companies, entities and public and private organs of research. The tests were organized in Comparative, Monadic or Both. He offers the tools and resources for tests of products. Structured in: Rules of Decision, Controls, Object of Tests, Totals, Reports (with signature), Objectives of the Test, Interpretation, Methodology, Processes and Results. It presents a listing to facilitate the access to each test. In english.

### **1.0 - PALM OS 3.5 or superior (ram 136 kb)**

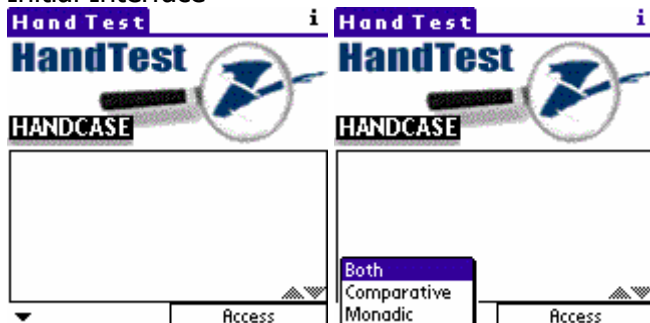
### Install

Just unpacking the zip on the desktop and give a double click the file **HandTest\_eng.prc** the tool installation of your Palm will open showing the file being synchronized, synchronize and ready.

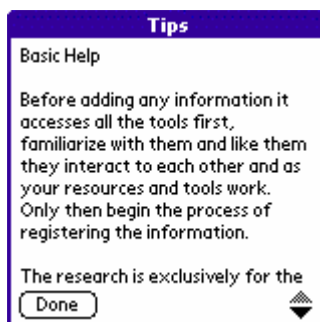


You recognize by the icon on the side.

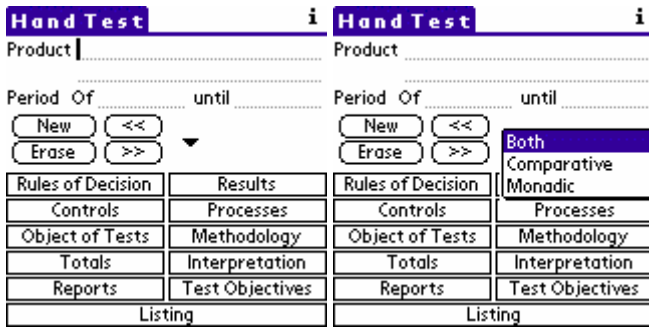
### Initial Interface



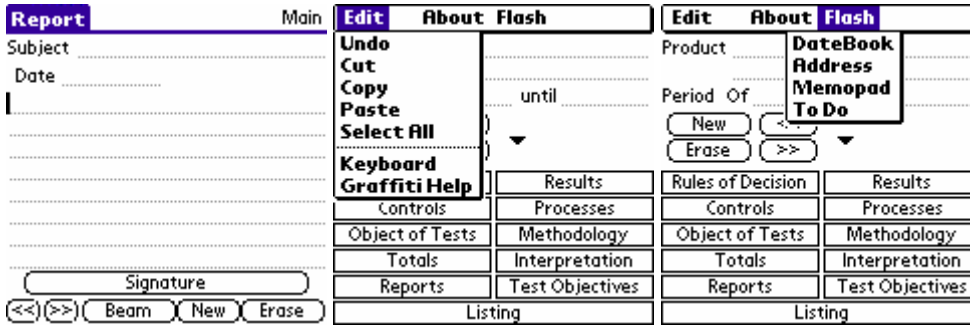
Here you have the interface where you view and search (type in the dropdown menu as shown in the second screen) each test account.



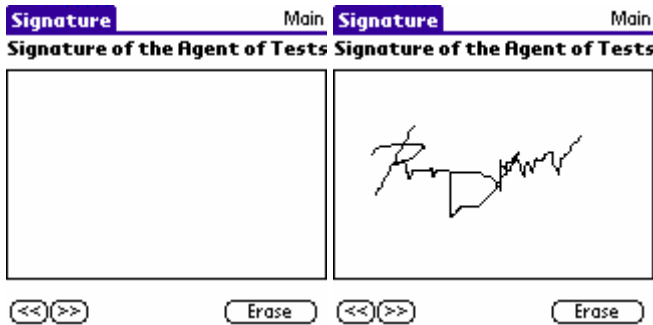
Here you enter the icon (i) the top of the screen basic help. Basic access Help because it instructs by example on the exclusion and navigation between tests.



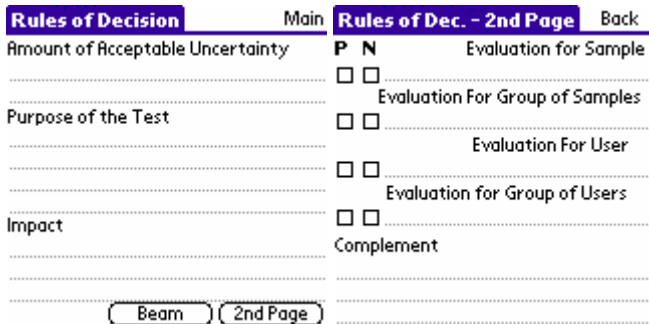
Here you prepare each test. These initial data will appear on screen generating a list of tests.



We also see that using the flash menu for direct access tools can access the palm memos including copying memos that prepared the Palm Desktop and then synchronized for example.



In the screens above prepares reports included the digital signature.



Here you establish the rules of decision for the test.



**Methodology** Main **Methodology - 2nd Page** Back

Applied methodology Complement

.....

.....

.....

Topics of the Methodology Observations

.....

.....

.....

Maintained     Updated  
 Implemented     Substituted

Here you establish a methodology for the test.

**Interpretation** Main **Interpretation - 2nd Page** Back

Type Complement

.....

.....

Observed agreement  
 Aleatory agreement

**P N** **P N**

.....  
  .....  
  .....  
  .....

Externa     Intern     Both

Here you can register for the interpretation of the test.

**Test Objectives** Main

Title Date .....

.....

Objectives

.....

.....

Descriptive


.....

.....

Here you set the objectives for the test.


**Hand Test** i



**HANDCASE**

Access

**Hand Test** i



**HANDCASE**

Both  
 Comparative  
 Monadic

Access

Here you enter in an organized and easy each test.

Any problem with the Software please contact HANDCASE [suporte@handycase.com](mailto:suporte@handycase.com)

**Access: [www.handycase.com/eng](http://www.handycase.com/eng)**

**© 2006/2009 Copyright by HANDCASE**