

HANDCASE

HANDROUGH USER MANUAL

This manual is intuitive as our software, is enough to observe the images to understand as to use best of and the more efficient form. The screens follow the logical order of the presentation them tools in the interface of each software.

Descriptive

Software for roughs of the whole type. With tools to rough in colors or black and white, two line thickness and organization of the roughs for types as rough of action, rough of calculus, rough of concept, rough of drawing, rough of example, rough of idea, rough of project, rough of task, rough of thought. It also possesses a tool of annotations the free hand with date resource. It also organizes in list all the roughs. Only for colored palm. In english.

1.0 - For all models with Palm System (ram 137 KB)

Install

Just unpacking the zip on the desktop and give a double click the file **Handrough_eng.prc** the tool installation of your Palm will open showing the file being synchronized, synchronize and ready.

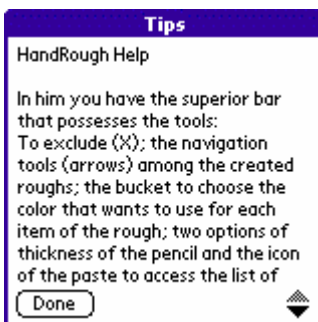


You recognize by the icon on the side.

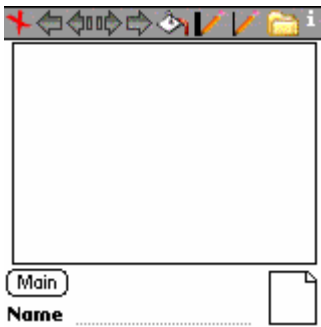
Initial Interface



Here you use the tool you want.



Here you access the help icon "?" the top of the screen of the tool roughs.



This is the screen of the roughs.

TOOLS

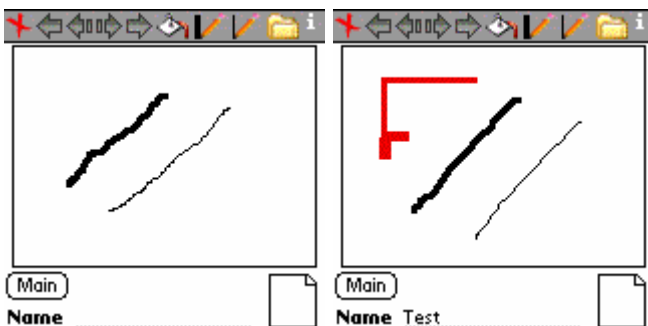
- saves the name and offers access to a list of roughs.
- excludes the rough done and the name.
- here you choose the color you want to trace following.
- when you click, automatically the trace is thicker in the following feature.
- when you click, the line automatically the trace is thinner in the following feature (by default always starts fine).
- click to start a new rough.
- clicking the arrow on the left, returns to the first rough, clicking the button on the right, advances to the final rough made.
- clicking the arrow on the left, back to the previous rough by clicking the arrow on the right, advancing to the next rough.

To choose which type of rough you want to do, just use the dropdown menu.

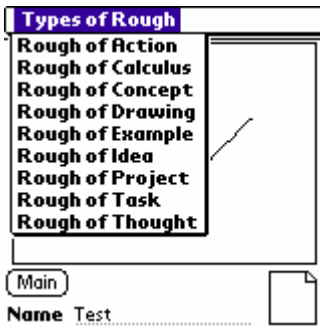
Recommendation: If you want to link to a name, type the corresponding name after the choice of the rough.



Here you choose the color of the stroke.



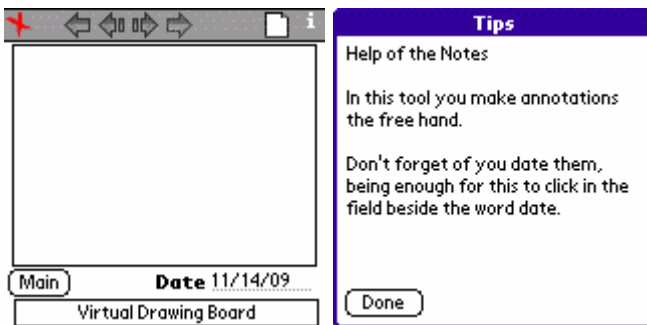
In the Tools menu, you choose the line width.



For this pulldown menu you choose the type of rough. Do not forget the following, name the rough, then start it.



Here you access the list of roughs.



Here you take notes freehand. In the second screen has access to key support tool for the "i" icon at the top of the screen notes.

Any problem with the Software please contact HANDCASE suporte@handycase.com

www.handycase.com

© 2004/09 Copyright by HANDCASE