

HANDCASE

H A N D G U I D E U S E R M A N U A L

This manual is intuitive as our softwares, it is enough to observe the images to understand as using in the best and more efficient way.

The screens follow the logical order of the presentation of the tools in the interface of each software.

Descriptive

With this program you can create the whole guide type. Create guides of restaurants, drugstores, services etc. The guide that to imagine can create. In English.

1.0 - PALM 3.5 or superior (ram 28 KB)

Install

If you received the program for e-mail, unzip is enough the zip file in the desktop and to give a double click in the file **Handguide.prc** the tool of installation of your Palm will open presenting the file to be synchronized, synchronize and ready or in the next sincronização he will be installed.

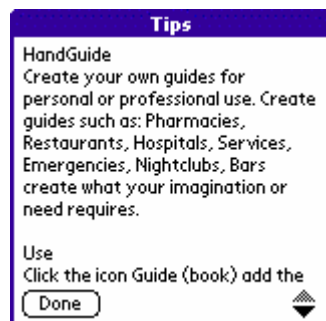


You will recognize it for the icon to the side.

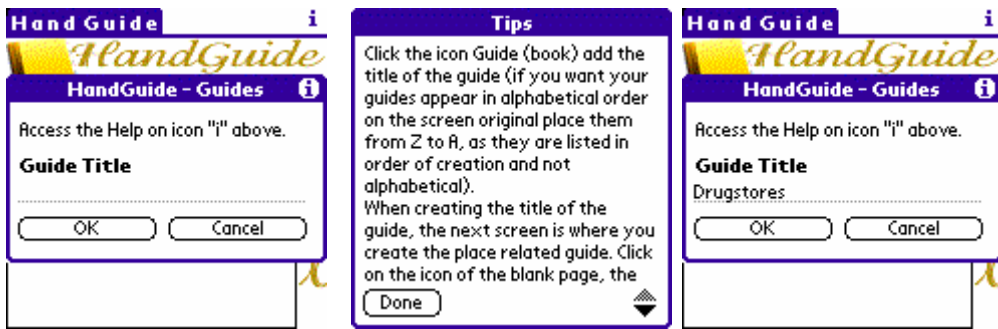
Initial interface



Here you have the interface where visualizes and it accesses the guides that it registered.

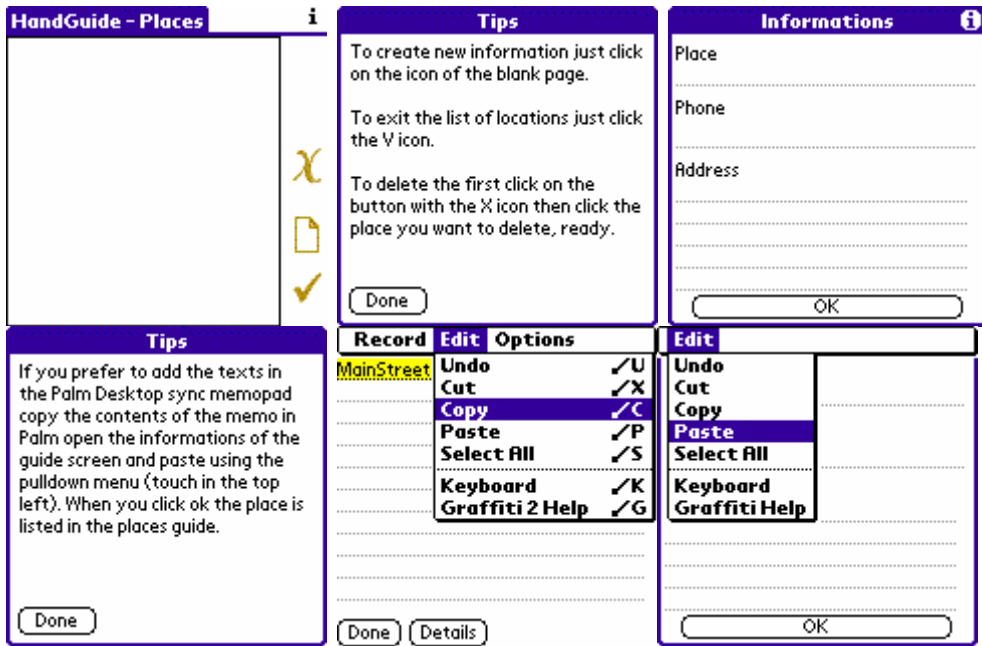


Here you helps that you access for the icon (i) in the top of the initial screen



Here you register each one of the guides that wants to create.

Important: it registers in the inverse order of Z to A. Apper by the last guide created.



In the screens you see above as the simple process of creating a guide it happens. But the principal is you to practice. Create how many guide types to want.



Repeating the operation for new guides.

Any problem with the Software contact HANDCASE suporte@handycase.com

Access: www.handycase.com

© 2007/09 Copyright by HANDCASE