

# HANDCASE

## HANDEX USER MANUAL

This manual is intuitive as ours softwares, observe the images to understand as to best and the more efficient use. The screens follow the logical order of the presentation of tools in the interface of each software.

### Descriptive

Program that helps to create thematic glossary, for consultation with update possibility. For Palm colored or black and white.

### **1.0 - PALM OS 3.5 or superior (ram 32 KB)**

### Instalation

Installation If you received the program for email, are enough to unpack zip in the work area and to give a double click in the archive Set **handdex.prc** the tool of installation of its Palm will go to open presenting the archive to be synchronized, synchronizes and ready or in the next synchronization it will be installed. If you he bought the compact disc is enough to use the installer or to have access for the Windows Explorer the directories, to give a double click in the archive Set **handdex.prc**, the tool of installation of its Palm will go to open presenting the archive to be synchronized, synchronizes and ready or in the next synchronization it will be installed.

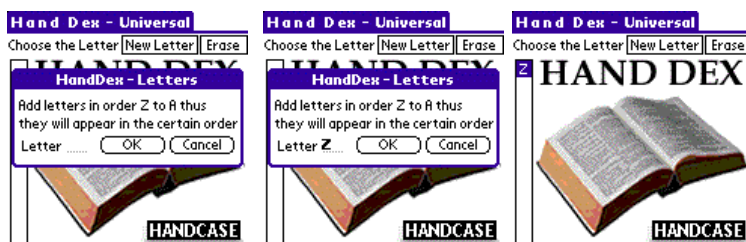


You will recognize it for the icon to the side.

### Initial Interface

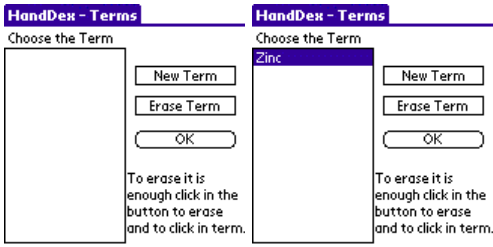


Here you have the interface where she visualizes and she has access the letters that registered in cadastre.

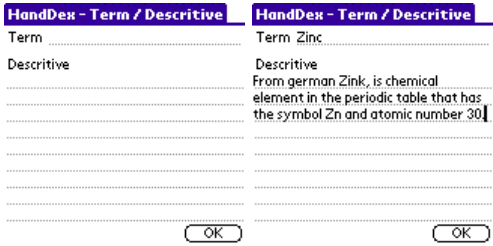


Here you register in cadastre each one of the letters.

**Important: it registers in cadastre in the inverse order of Z to A.**



Here you register in cadastre the entailed terms the letter. In the second screen you visualize the list of terms.



Here you visualize and reedit each term and its description.

Any problem with Software enters in contact with HANDCASE [suporte@handycase.com](mailto:suporte@handycase.com)

**Access: [www.handycase.com](http://www.handycase.com)**

**© 2007 Copyright by HANDCASE**