

HANDCASE

HANDBACKUP USER MANUAL

This manual is intuitive as our software, just watch the images to understand how to use the best and most efficient way. The screens follow the logical order of the presentation of the tools in the interface of each software.

Descriptive

With this program you can make backups of safety in card of memory. He can choose the backup type: only prc, only pdb, only registrations or only system, he can choose the card that wants to record the backup and to create backup directories. Besides obtaining information of the palm and of the card. To generate backup for date and hour or it dates. Easy and fast.

1.0 - PALM OS 3.5 or superior (ram 64 KB)

Requeriment: **Memory card**

Install

If you received the program by e-mail, just unpacking the zip on the desktop and give a double click the file **HandBackup.prc** the tool installation of your Palm will open showing the file being synchronized. Synchronize and ready, or at the next synchronization will be installed.

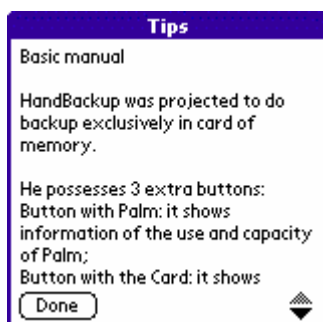


You recognize the icon on the side.

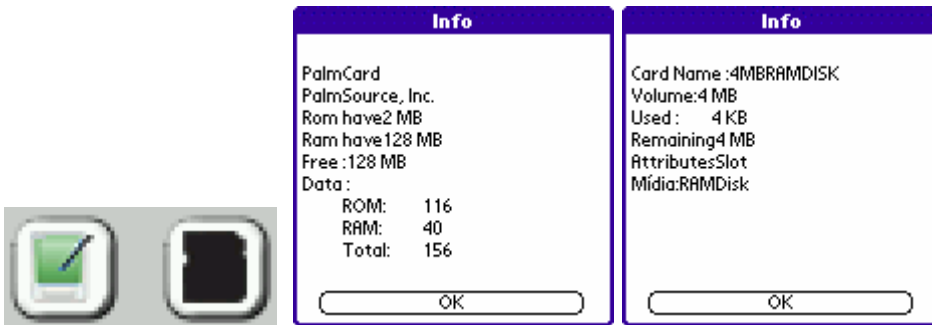
Initial Interface



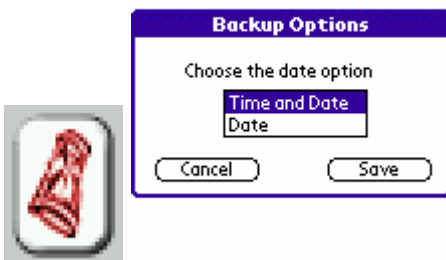
Here you have a single interface and a few clicks a secure backup that is generated directly on the memory card.



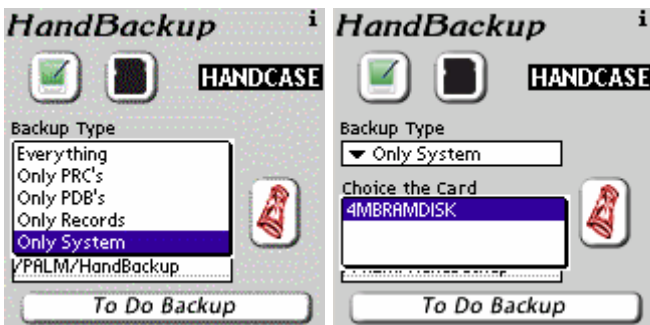
Here you see the basic manual that is available via the icon (i) at the top of the screen.



In these two buttons you have access in order: Palm Button the most important information and useful of your palm; Card button you can access the information from your memory card.



Through this button you can set the backup option for time and date or date only.



This first drop-down menu you choose the type of backup you want to make between five options (all, only prc's - the programs and games, only pdb's - database generated by programs and games, only records that is all that has been used effectively eg contacts, memos, information that registered in other programs and settings to play with their applications, and only system - whatever the judge handbackup critical and that should be backed up for your safety).

Still in the first screen you can add directories to the default directory backup that is handbackup eg / etc palm/handbackup/backup1

In the second menu you choose the card you will use for backup (where the menu to see the the name of the card is not the backup, just leave the handbackup, switch card and re-activate it again).



Here you see the handbackup working.

Recommendation: Back up at least every 15 days.

Any problem with the Software please contact HANDCASE suporte@handycase.com

<http://www.handycase.com/eng/>

© 2007/2010 Copyright by HANDCASE