

HANDCASE

FABRICATE USER MANUAL

This manual is intuitive as our software, is enough to observe the images to understand as to use best of and the more efficient form. The screens follow the logical order of the presentation them tools in the interface of each software.

Descriptive

Suite of 15 tools. As he is quick and easy to administer and organize, production lines and all kinds of factory floor. For the largest companies serves as a complement mobile and updated. Structured in Planning, Line Control, History, Costs, Teams, Failure Control and Bottleneck Production, Batch Production, Supplies, Inspection, Rework, Shift Work Table, Inventories, Orders, Reports and Resources.

1.0 - PALM OS 3.5 or superior (ram 134 KB)

Install

Just unpacking the zip on the desktop and give a double click the file **Fabricate.prc** the tool installation of your Palm will open showing the file being synchronized, synchronize and ready.



You recognize by the icon on the side.

Initial Interface



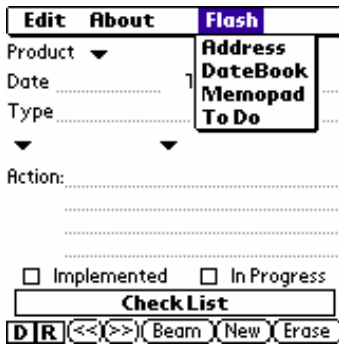
Here you choose the tool you want.



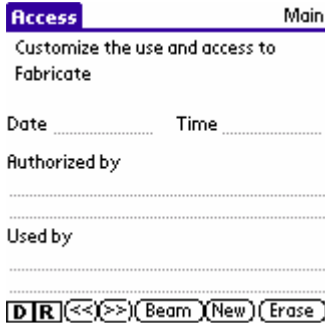
Standard menu, just copy and paste the other tools in producing information and vice versa.

Note: You can copy to your Palm memopad of all the information and put in Fabricate and copy it and paste the memopad to use from the Palm Desktop.

Tools button in the Beam. Facilitates the transfer to another Palm that has installed Fabricate of information on each screen of each tool.

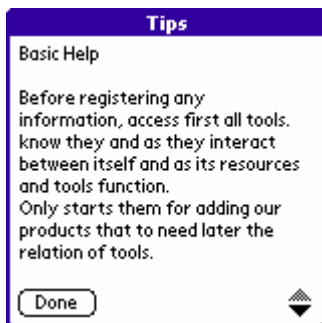


Here as in the screens of other tools you choose the menu and access the tools of the standard Palm can close them to return directly to Fabricate.

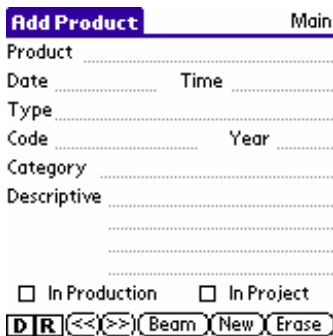


By clicking on the button "A" in the initial screen you can customize your copy of Fabricate while generating the access control to the software whenever it deems necessary.

Example: Pass the Palm to Fabricate a charge puts the time when the charge will change the time and day that is replacing the person, so the information collected will always bond with the person who completed the schedules filled with the tools the screen for access.



Basic Help by the "i" icon on top of the initial screen.



Here you organize the data of their products. Visible on the screens of all tools. You can organize the information product to product.

History Main

Product ▼

Date Time

Production Volume |

Daily Weekly Monthly

Goal Done

Expanding Production in

Reduce Production in

.....

Notify Update

UpDated

DIR (<<) (>>) (Beam) (New) (Erase)

You organize the history of each product.

Line Control Main

Product ▼

Date Time

Type

Actions

Warn

.....

Check Achieved

Stop Fix Done

Authorize

DIR (<<) (>>) (Beam) (New) (Erase)

Here you organize the information of the assembly line, product by product.

Costs Main

Product ▼

Checked in

Type |

Descriptive

.....

Items

..... \$

..... \$

..... \$

DIR (<<) (>>) (Beam) (New) (Erase)

Here you arrange costs in the production line product to product.

Teams Main

Product ▼

Date

Type |

Sector

.....

Activities

.....

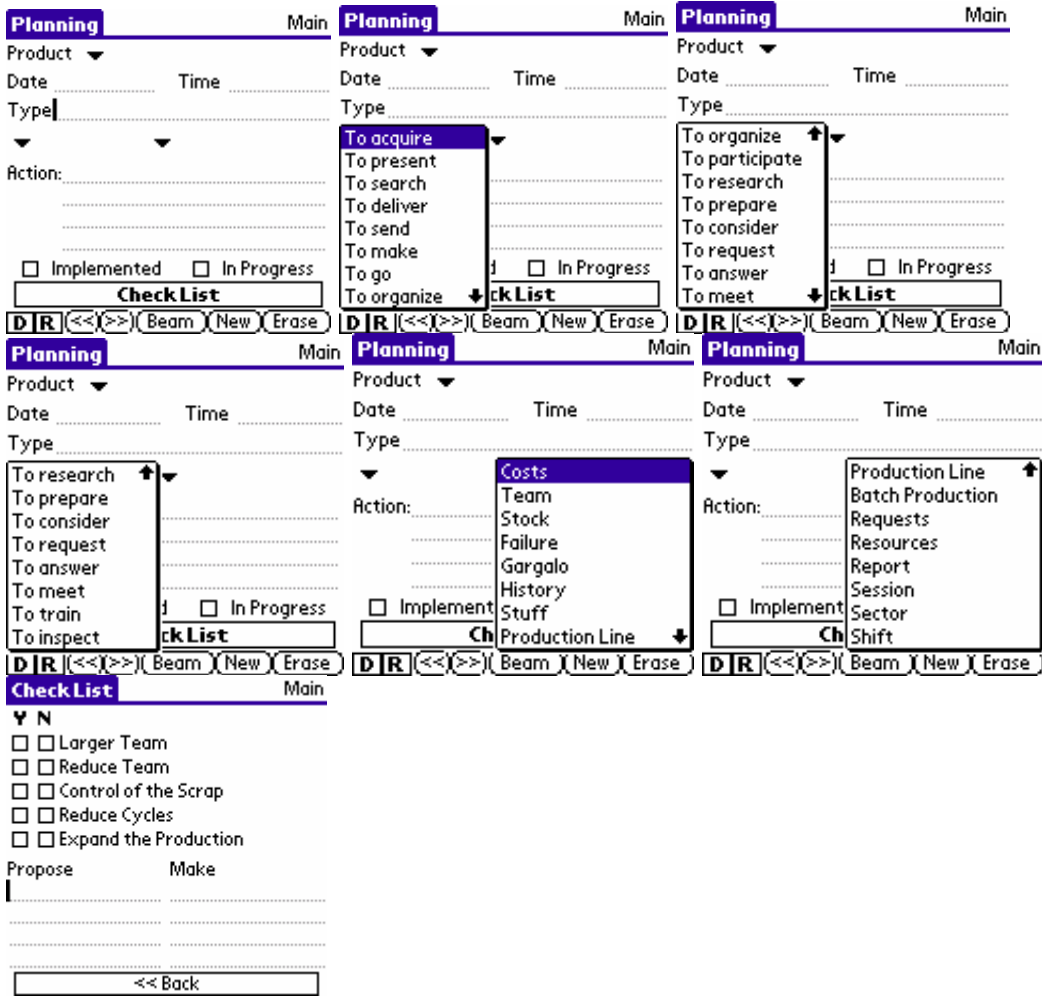
Training

ReTraining Expanding Team

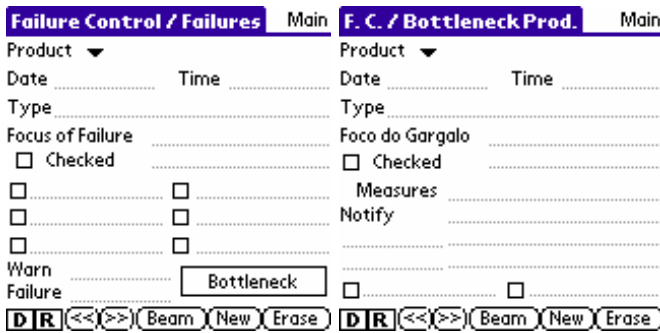
UpDated

DIR (<<) (>>) (Beam) (New) (Erase)

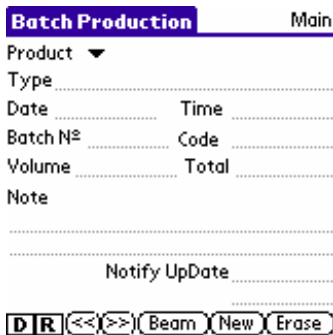
You organize the basic information of each team, tying the team for each product.



In these screens you prepare a basic planning of production.



Here you arrange controls it deems necessary for the gaps and bottlenecks in production.



Here you organize the information on production batches of product to product.

Supplies Main

Product ▼

Date Time

Type

Batch Code

Supplier

Stuff

Missing Notify Purchase

In stock

Acquired

DIR << >> Beam New Erase

Here you organize the information about stuffs, product by product.

Inspection Main

Product ▼

Date Time

Type

Actions Inspected

.....

.....

.....

.....

.....

DIR << >> Beam New Erase

Here you organize the information from inspections, product by product.

ReWork Main

Product ▼

Type

Date in until

Time in until

Sector

Activities Planned

Canceled Confirmed

DIR << >> Beam New Erase

Here you organize the information on rework, product by product.

| | | |
|---|---|--|
| <p>Shift Work Table Main</p> <p>Product ▼</p> <p>Date Time</p> <p>▼ Team</p> <p>Date Time</p> <p>▼ Team</p> <p>Date Time</p> <p>▼ Team</p> <p>Date Time</p> <p>▼ Team</p> <p>DIR << >> Beam New Erase</p> | <p>Shift Work Table Main</p> <p>Product ▼</p> <p>Date Time</p> <p>All 1st Shift 2nd Shift 3rd Shift 4th Shift</p> <p>Team</p> <p>Time</p> <p>Team</p> <p>Time</p> <p>Team</p> <p>Time</p> <p>Team</p> <p>Time</p> <p>DIR << >> Beam New Erase</p> | <p>Shift Work Table Main</p> <p>Product ▼</p> <p>Date Time</p> <p>▼ Team</p> <p>Date Time</p> <p>All 1st Shift 2nd Shift 3rd Shift 4th Shift</p> <p>Team</p> <p>Time</p> <p>Team</p> <p>Time</p> <p>Team</p> <p>Time</p> <p>DIR << >> Beam New Erase</p> |
|---|---|--|

| | |
|--|--|
| <p>Shift Work Table Main</p> <p>Product ▼</p> <p>Date Time</p> <p>▼ Team</p> <p>Date Time</p> <p>All 1st Shift 2nd Shift 3rd Shift 4th Shift</p> <p>Team</p> <p>Time</p> <p>Team</p> <p>Time</p> <p>Team</p> <p>Time</p> <p>DIR << >> Beam New Erase</p> | <p>Shift Work Table Main</p> <p>Product ▼</p> <p>Date Time</p> <p>▼ Team</p> <p>Date Time</p> <p>▼ Team</p> <p>All 1st Shift 2nd Shift 3rd Shift 4th Shift</p> <p>Team</p> <p>Time</p> <p>Team</p> <p>Time</p> <p>Team</p> <p>Time</p> <p>DIR << >> Beam New Erase</p> |
|--|--|

You organize the scale of their teams in their shift, product by product.

Inventories Main

Product ▼

Date Time

Batch | Code

Type

Volume in Stock

Replacement Volume

Difference Checked

+ Production Replacement Warn

- Production

UpDated

D **R** << >> Beam New Erase

Here you organize the information on stocks for the production line, product by product.

Orders Main

Product ▼

Date Time

Volume |

Descriptive

.....

.....

Check Logistics

Notify Delivery Date

Delivered

D **R** << >> Beam New Erase

Here you organize the information on orders to be produced, organized by product.

Report Main

Product ▼

Date Time

Title |

Summary

.....

.....

Notify report submission

Done

D << >> Beam New Erase

Here you will prepare reports for each product. Access the tool of any reports by the **R** button on the base of tools.

Resources Main

Product ▼

Date Time

Type |

List

.....

Note

Updated Checked

D **R** << >> Beam New Erase

Here lists the resources obtained or sought to be linking to each product.

Diary Main

Subject

Date

.....
.....
.....
.....
.....
.....
.....

<< >> Beam New Erase

Here is your personal notes day by day. And any tool to access the Diary through the button **D** on the basis of the tools.

Any problem with the Software please contact HANDCASE suporte@handycase.com

Access: www.handycase.com

© 2006/2009 Copyright by HANDCASE