

HANDCASE

D I A G N O S E U S E R M A N U A L

This manual is intuitive as our software, is enough to observe the images to understand as to use best of and the more efficient form. The screens follow the logical order of the presentation them tools in the interface of each software.

Descriptive

In this new version suite of 10 medical tools for Palm to organize diagnostics information. Sketches of male and female Reproductive System, Urinary System, Circulatory System, Cardiac System, Brain, Respiratory System, Muscular System, Digestive System and Skeleton. More Freehand Notes tool with dated notes.

2.0 - PALM OS 3.5 or superior (ram 395 KB)

Install

Just unpacking the zip on the desktop and give a double click the file **Diagnose.prc** the tool installation of your Palm will open showing the file being synchronized, synchronize and ready.



You recognize by the icon on the side.

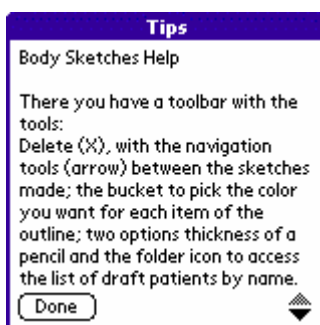
Initial Interface



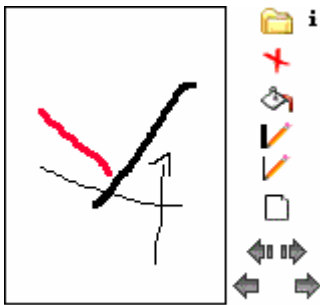
Here you choose the tool, you want to use.

Tip:

Use it to show their patients, colleagues and students where appropriate, points of reference of possible sources of problems or symptoms.



Here you have access to the internal Help, accessible by the "i" icon at the top of the screen and the initial screen of the tool Body Sketches.

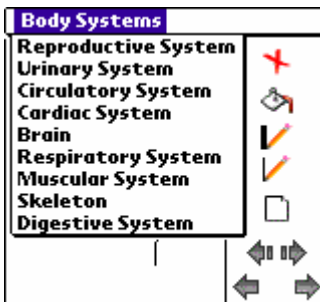


Patient

Here you test, when used for the first time.

The tools are in order:

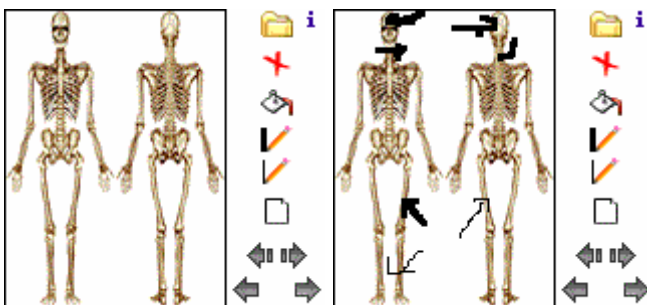
- 📁 saves the patient and offers access to a list of patients.
- +
- 👉 here you choose the color you want to trace following.
- 🖋️ when you click, automatically the trace is thicker in the following feature.
- 🖋️ when you click, the line automatically the trace is thinner in the following feature (by default always starts fine).
- click to start a new sketch.
- ⏪ ⏩ clicking the arrow on the left, returns to the first draft, clicking the button on the right, advances to the final draft made.
- ⏪ ⏩ clicking the arrow on the left, back to the previous draft by clicking the arrow on the right, advancing to the next sketch.



Patient

To choose which system want to make sketches, signs or markings, simply use the dropdown menu.

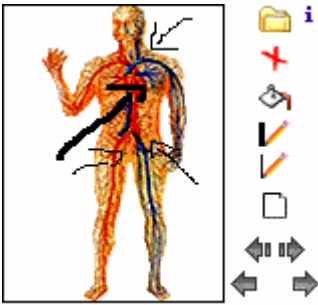
[Recommendation: if you want to link a patient, type the corresponding name after the choice of the system.](#)



Patient

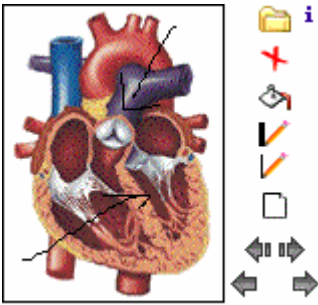
Patient

Here you makes sketches possible fractures or lesions.



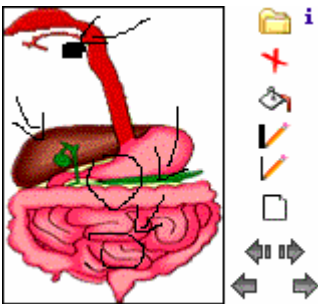
Patient George

Here you makes sketches possible circulatory obstructions or injuries.



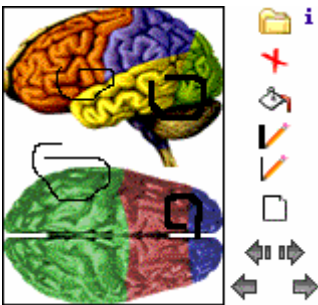
Patient George

Here you can indicate lesion or obstructions in the heart.



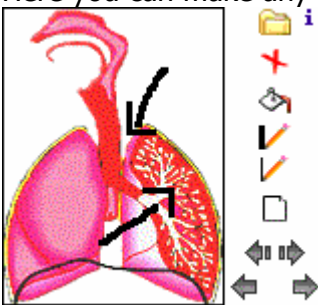
Patient

Here you can indicate lesion, obstruction or any indication in the digestive system.



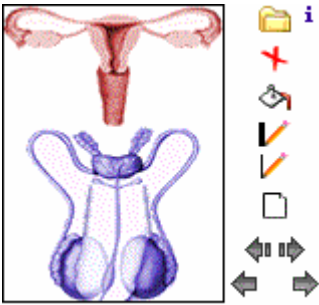
Patient

Here you can make any indications of the two types of cutting the brain.



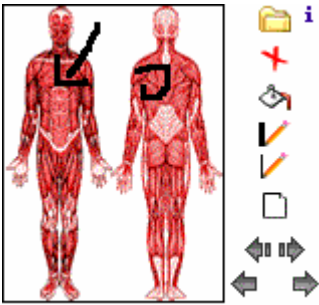
Patient

Here you can indicate lesion, obstruction or any indication in the respiratory system.



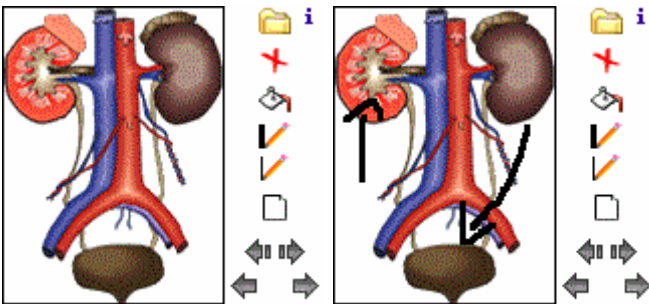
Patient

Here you makes sketches possible problems in male and female reproductive systems.



Patient

Here you makes sketches possible lesion or muscle contractures.



Patient

Patient

Here you can indicate lesion, obstruction or any indication, in the urinary system.

Patient Sketch List

Patients

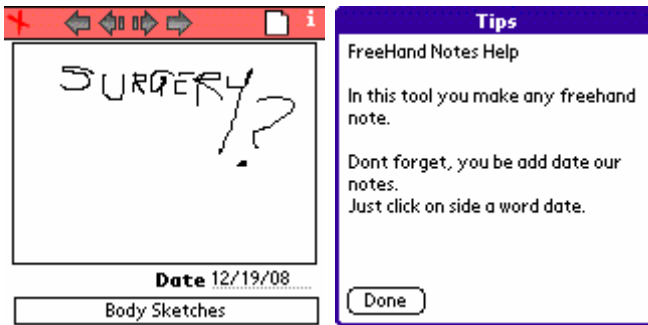
George



Body Sketches

Main

Here you access the list of patients.



Here you notes for free hand. On the second screen has access to basic help of the tool by the "i" icon at the top of the screen notes.

Any problem with the Software please contact HANDCASE suporte@handycase.com

Access: www.handycase.com/eng

© 2005/09 Copyright by HANDCASE