

HANDCASE

DELIVERY USER MANUAL

This manual is intuitive as ours softwares, observe the images to understand as to best and the more efficient use. The screens follow the logical order of the presentation of tools in the interface of each software.

Descriptive

Suite of 7 tools integrated in an only interface for companies who need to automatize deliveries of products. It offers register tools and to organize deliveries with the possibility to get and to keep the signature of the addressee. It registers day hour, products and customers. It offers tools of reports and performance of the team deliveries. In English.

1.5 - PALM OS 3.5 or superior (ram 78 KB)

Instalation

Installation If you received the program for email, are enough to unpack zip in the work area and to give a double click in the archive Set **delivery.prc** the tool of installation of its Palm will go to open presenting the archive to be synchronized, synchronizes and ready or in the next synchronization it will be installed. If you he bought the compact disc is enough to use the installer or to have access for the Windows Explorer the directories, to give a double click in the archive Set **delivery.prc**, the tool of installation of its Palm will go to open presenting the archive to be synchronized, synchronizes and ready or in the next synchronization it will be installed.



You will recognize it for the icon to the side.

Initial Interface



Here you choose the tool that she desires to use.



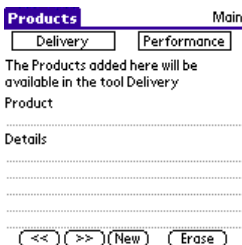
Here as in the screens of the other tools you choose in the menu the action option that to judge necessary. Obs.: You the information will be able to copy of the Memopad of its Palm all and to place in the Delivery as well as copying of it and paste in the Memopad to use from the Palm Desktop.



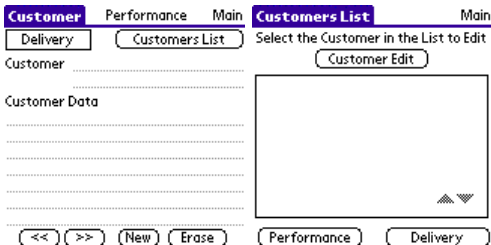
In the tools the button beam. It facilitates the transference for another Palm that has the installed Delivery of the information of patients between colleagues.



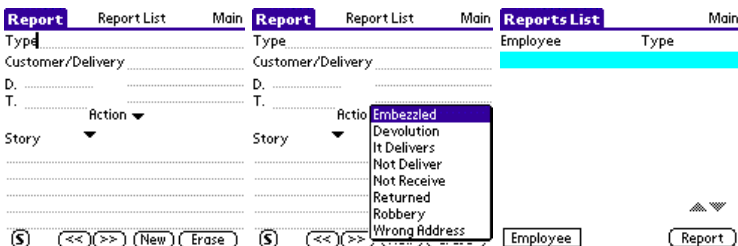
Here as in the screens of the other tools you choose in the menu and have access the tools standard of the Palm being able to you close it them to come back direct toward the Delivery.



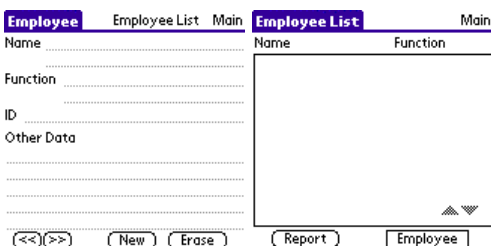
Here you add the Products that will be available in the tool Deliveries.



Here you add the relation of Customers. In the second screen you visualize the relation of customers.



Here and in the second screen you prepare its reports. In the third screen you visualize the relation of reports.



Here you relate the employees who will make the deliveries. In the second screen you visualize the relation of employees.

