

HANDCASE

COLLECTOR USER MANUAL

This manual is intuitive as ours softwares, observe the images to understand as to best and the more efficient use. The screens follow the logical order of the presentation of tools in the interface of each software.

Descriptive

Organize and catalog easily all your collections in your Palm. You can save all the information for each item of each collection. It includes a searching tool and 14 types of collection by title: antiquity, toys, cards, records, documents, films, books, rocks, stamps, coins, magazines, miniatures, souvenirs and objects. With description and Complement.

1.7 - PALM OS 3.5 or superior (ram 95 KB)

Instalation

Installation If you received the program for email, are enough to unpack zip in the work area and to give a double click in the archive Set **collector.prc** the tool of installation of its Palm will go to open presenting the archive to be synchronized, synchronizes and ready or in the next synchronization it will be installed. If you he bought the compact disc is enough to use the installer or to have access for the Windows Explorer the directories, to give a double click in the archive Set **collector.prc**, the tool of installation of its Palm will go to open presenting the archive to be synchronized, synchronizes and ready or in the next synchronization it will be installed.

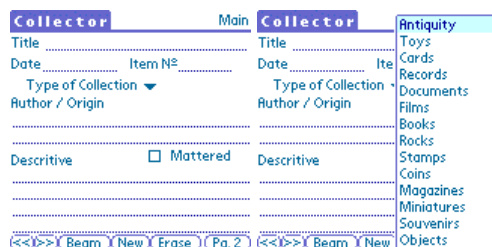


You will recognize it for the icon to the side.

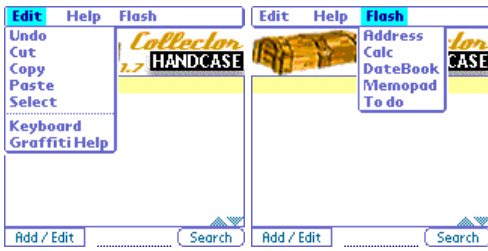
Initial Interface



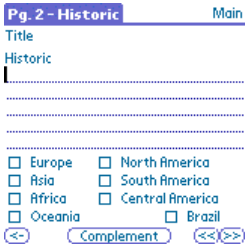
Here you have the interface where she visualizes each item and of each one of the collections. He will be able to make research in itens registered in cadastre.



Here you register in cadastre each item. He chooses the collection that he desires to organize.



Here you can copy and glue with the use of the suspended menus. Example.: To copy of the Memopad itens that it edited in the Memopad and vice versa of the PalmDesktop. In the second screen you see the menu suspended flash of direct access fast e the tools standard of the Palm. Useful to go until we memopad it and to come back it direct Collector when it will be copying and paste.



In this screen you add Description and define the geographic origin.



In this screen you add you will extras details.

Any problem with Software enters in contact with HANDCASE suporte@handycase.com

© 2007 Copyright by HANDCASE