

HANDCASE

HANDSTARTER

USER MANUAL

This manual is intuitive as our software, is enough to observe the images to understand as to use best of and the more efficient form. The screens follow the logical order of the presentation them tools in the interface of each software.

Descriptive

The organizer and intuitive launcher that was missing in your Palm. You can now replace the launcher on the palm HandStarter, click and drag with it is easy. You organize its programs in folders accessible by tabs to a click and create as many folders need navigating by the arrows. In interface only have access to important data instantly, as memory used in percentage and in kb, battery power, hour, day, month, voltage. Organize your programs on lists or clickable icons. To delete a program simply drag to the Trash. To disconnect your palm just click on the icon of strength. All very easy to use. In English.

1.3 - PALM OS 3.5 or superior (ram 100 KB)

Install

Just unpacking the zip on the desktop and give a double click the file **HandStarter.prc** the tool installation of your Palm will open showing the file being synchronized, synchronize and ready

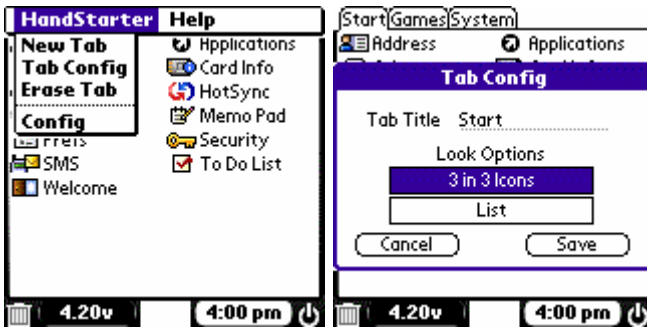


You recognize by the icon on the side.

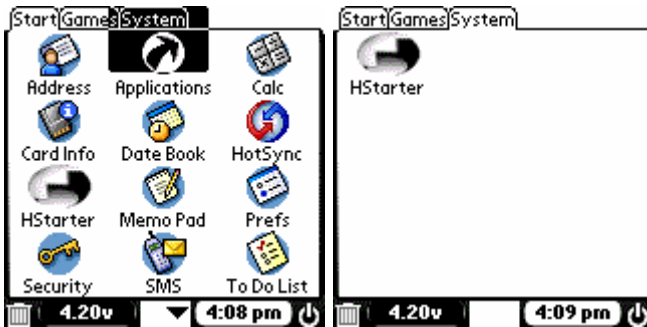
Interface inicial



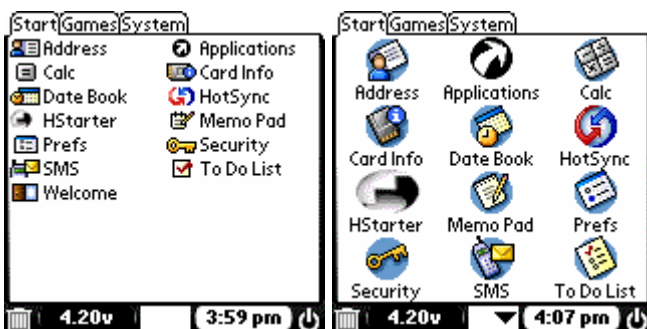
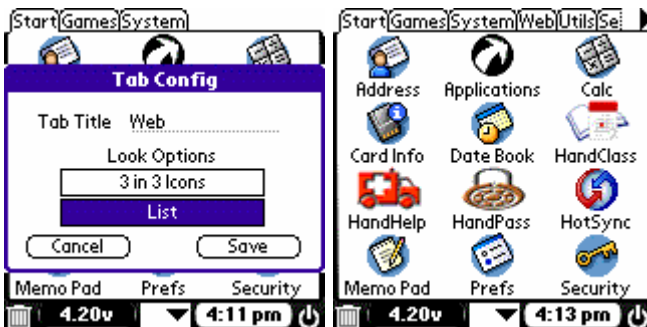
Here you organizes and easy access to a tap their programs and games. When the HandStarter is started for the first time, he carries all programs and games on the tab Start with the display list. Simply access the drop-down menu and change the configuration of each flap for-3 on 3 icons if you wish. It comes with 3 tabs Start, Games and System, organize dragging the icon of each corresponding to folder. Then create your folders, examples: Utils, Web etc. You can rename the folder system to Sys so that more tabs become visible without the need to use the arrow keys to navigate. But if you want to have many tabs, simply navigate by the arrow at the top right of the screen.




Simply access the drop-down menu and change the configuration of each flap for-3 on 3 icons if you wish.



Here you drag an application by the icon for a newly created tab and see how it is after configures the tab for-3 on 3 icons. Here you can see an icon is dragged to the Trash (transparent rectangle).



Here you look at the base of the screen the resources that change to a click. In the  button you off your palm. The arrows are the basis for you surf the folder down and up if you have more than 12 icons (if you choose this setting).

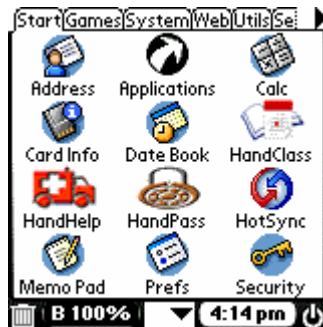


Here you see the manual that loads at startup of the first load of HandStarter. Then, always accessible via the pull-down menu option in the Help/Manual

Before



After



Any problem with the Software please contact HANDCASE suporte@handycase.com

Access: www.handycase.com

© 2008 Copyright by HANDCASE