

HANDCASE

HANDPROPERTY USER MANUAL

This manual is intuitive as ours softwares, observe the images to understand as to best and the more efficient use. The screens follow the logical order of the presentation of tools in the interface of each software.

Descriptive

Suite of 6 programs integrated in an only interface to organize the information and the sales of real estate services (rent, sell etc) you organized for types and customers. A software for real estate correctors and. It offers tools to manage expenditures, requests of customers and prospects, organizes the property for customer. It still offers to agenda and tool of reports. In English.

1.0 - PALM OS 3.5 or superior (ram 77 KB)

Instalation

Installation If you received the program for email, are enough to unpack zip in the work area and to give a double click in the archive Set **handproperty.prc** the tool of installation of its Palm will go to open presenting the archive to be synchronized, synchronizes and ready or in the next synchronization it will be installed. If you he bought the compact disc is enough to use the installer or to have access for the Windows Explorer the directories, to give a double click in the archive Set **handproperty.prc**, the tool of installation of its Palm will go to open presenting the archive to be synchronized, synchronizes and ready or in the next synchronization it will be installed.



You will recognize it for the icon to the side.

Interface inicial



Here you choose the tool that she desires to use.



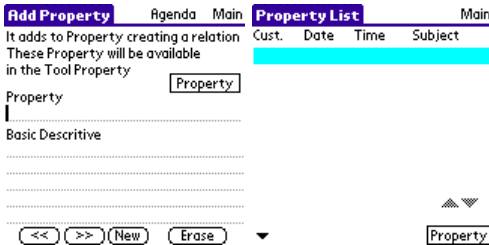
Menu standard, is enough to copy of the other tools and necklace information in the vice versa HandProperty. Obs.: You the information will be able to copy of the Memopad of its Palm all and to place in the HandProperty as well as copying of it and paste in the Memopad to use from the Palm Desktop. In the tools the button beam It facilitates the transference for another Palm that has the HandProperty installed of the information in each screen of each tool.



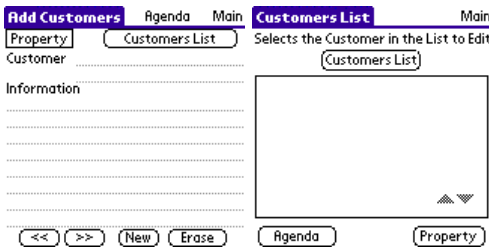
In this menu you export to another Palm with Handproperty the expenses, property and agenda.



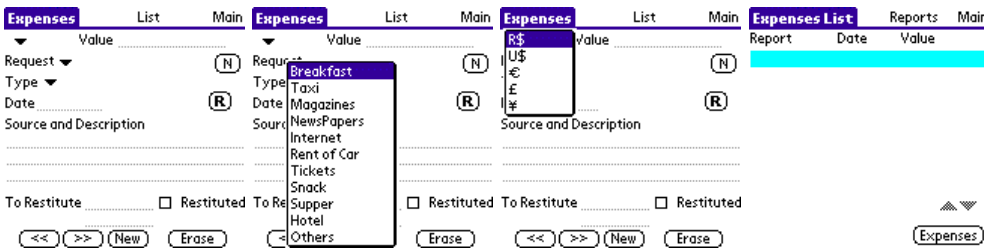
Here as in the screens of the other tools you choose in the menu and have access the tools standard of the Palm being able to you close it them to come back direct toward the HandProperty.



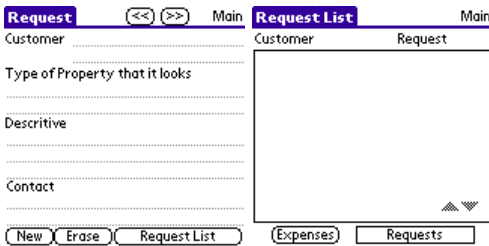
Here you add Property that will be available in the Agenda and the tool Property.



Here you add Customers. In the seguda screen you visualize the list of customers.



Here you organize the expenditures. Here you visualize the list of expenses.



Here you prepare requests of customers whom they desire to acquire or to rent some property. Here you visualize the list of requests.

Here you organize the basic information on property that can or not to be tied with the customers. He serves as its catalogue of options to the customers. Here you visualize the list of property.

Here you set appointments the visits the customers and other commitments, etc. In the second screen you visualize the relation of the agenda.

Here you prepare reports, tool that this available one in the other tools through button **R** in the screens.

Any problem with Software enters in contact with HANDCASE suporte@handycase.com

Access: www.handycase.com

© 2007 Copyright by HANDCASE