

HANDCASE

HANDPASS USER MANUAL

This manual is intuitive as our software, just watch the images to understand how to use the best and most efficient way. The screens follow the logical order of the presentation of the tools in the interface of each software.

Descriptive

In new version with double checking master password creator. Software that provides security for storage and organization of your passwords, logins and numbers of bank card, credit or debit, card shop, login and password, computer, computer login and password and several other options of the password, including code validation. It password for access to 128 bits and algorithm blowfish. Structured for be flexible in the record of passwords. Offering choices of types of password than to have all the information organized into list and by categories. With It just remember a single password, your master password. In English.

2.1 - PALM OS 3.5 or superior (ram 48 KB)

Install

If you received the product by e-mail or download, simply unpacking the zip on the desktop and give a double click the file **HandPass.prc** the palm installation tool will open showing the file being synchronized, just synchronize, ready or in the next synchronization will be installed.



You recognize the icon on the side.

Initial Interface



In HandPass you security guard with the passwords or personal and professional. Here you register your master password safe and is the interface's initial HandPass.

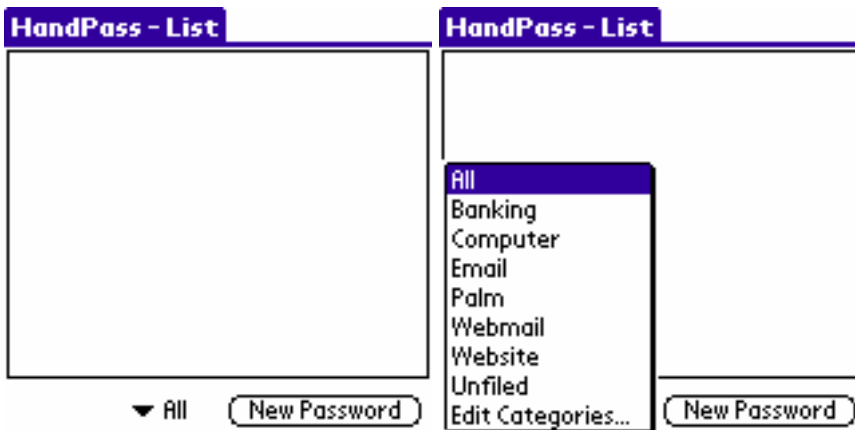
Important: Before register any information, familiarize themselves with the HandPass and how it works. Only then begin to create the categories that need then create the relationship of information. Add the password as it deems necessary to safely store your information.

Security

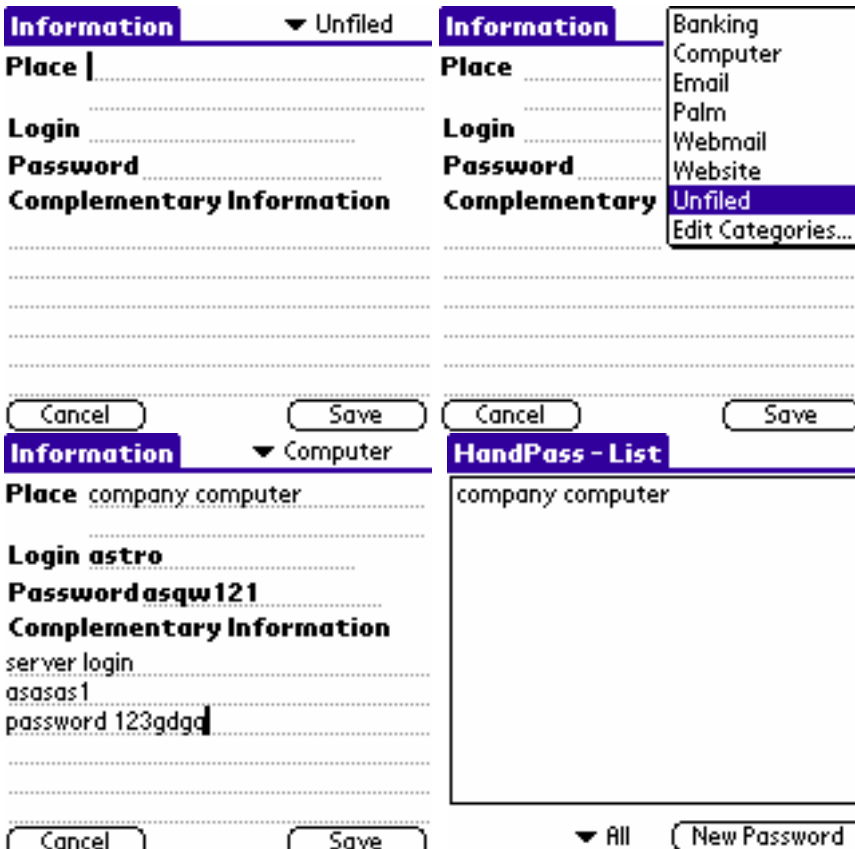
The password system is so powerful that if you have to reset the Palm password is discarded. You will need create a new master password valid.



Here you access the Handpass basic manual.



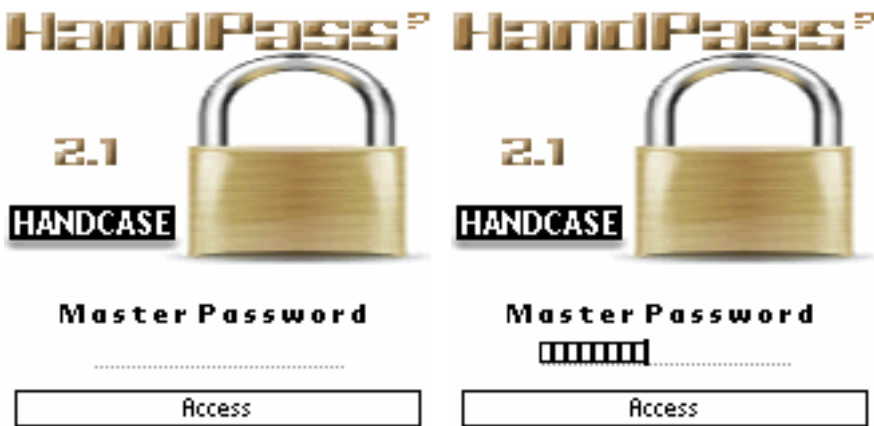
Here you see the information and organizes the view that the categories created. Visualizes still ordering from A to Z or Z to A using the lower left button.



In the screens above you see as register the information and how it will be viewed.



To change the password you need access on the screen the list of passwords go to the top menu screen exchange password, then you can make the switch.



For next access this screen above appear, and mask master password.



When click in any password in the list, info view the screen with information, but without edit. For edit click in the edit button.

Any problem with the software please contact HANDCASE suporte@handycase.com

Access: www.handycase.com

© 2006/2008 Copyright by HANDCASE