

HANDCASE

HandHome USER MANUAL

This manual is intuitive as our software, just watch the images to understand how to use the best and most efficient way. The screens follow the logical order of the presentation of the tools in the interface of each software.

Descriptive

Suite of 15 tools. Organiser of all the information in your home. Maintenance, Insurance, Laundry, Payments, Useful Phones (including in the list of emergency), Employees, Daily, Taxes, Gifts, Subscribes, Reminders, Services, Expenses, and Extras, Notes with checklist. In English.

1.0 - PALM OS 3.5 or superior (ram 115 KB)

Install

If you received the product by e-mail or download, simply unpacking the zip on the desktop and give a double click the file HandHome.prc the palm installation tool will open showing the file being synchronized, just synchronize, ready or in the next synchronization will be installed.



You recognize the icon on the side.

Initial Interface



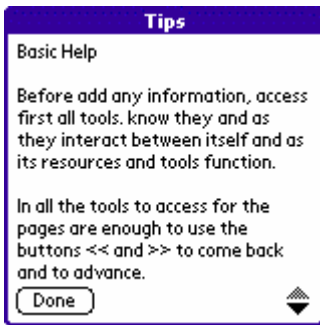
Here you choose the tool that you want.



Menu default, just copy and paste from other tools in HandHome information and vice versa.

Note: You may copy of your Palm Memopad of all the information and place on the HandHome and copy and paste it to use in Memopad from the Palm Desktop.

In the Tools button **Beam**. It facilitates the transfer to another Palm that has the HandHome installed the information on each screen of each tool.



Here the basic help accessible by icon (i) at the top of the screen.

Maintenance Main

Repair Type

.....

Made for Me Date

Made for Employee \$

Made for Company

Descriptive

.....

.....

Services Made in

(N) (<<) (>>) (New) (Erase) (Beam)

Here you organizes information on repairs and maintenance of the house.

Insurances Main

Insuring

Policy

Beneficiary

Covering

.....

Validity

Lack

Remember Payment

Value \$

(N) (<<) (>>) (New) (Erase) (Beam)

Here you organizes information on insurances.

Laundry Main

Place |

.....

Manager

Phone

Laundrying Date

Out Home Repair

In Home Collect in

Complement

.....

(N) (<<) (>>) (New) (Erase) (Beam)

Here you organizes information on laundry.

Payments Main

Date

Pay for

Payment Type

Descriptive

.....

.....

Warn Payment

Paid

Reimbursed

(N) (<<) (>>) (New) (Erase) (Beam)

Here you organizes information from the house payments.

Useful Phone List			New		Useful Phones		Main		Add Useful Phone Numbers	
▼ All					Organize the Useful Phones				Add one or more numbers	
Name	Phone	R	E		Name				This number appear on list in screen Useful Phone List, there you select in the suspended menu and finished the cadastre.	
		<input type="checkbox"/>	<input type="checkbox"/>		Choose a number		<input type="button" value="Add"/>			
					<input type="checkbox"/> Regular <input type="checkbox"/> Emergency Complement				Number	
									<input type="button" value="New"/>	<input type="button" value="Save"/>
					Useful Phone List				<input type="button" value="New"/>	<input type="button" value="Save"/>
					<input type="button" value="N"/> <input type="button" value="<<"/> <input type="button" value=">>"/> <input type="button" value="New"/> <input type="button" value="Erase"/> <input type="button" value="Beam"/>				<input type="button" value="<<"/>	<input type="button" value=">>"/>

Here you organize the useful phones (normal and emergency). You see the list you need to use quickly. Just click the button again, fill the second screen, click the register screen in the third put the numbers, back to the second screen there down menu choose each phone number and link to each contact.

Recommendation: Create the first list of numbers then bind to each contact.

Employees		Main
Name		
Contracted in		
Address	\$	
Phone	Other ID	
ID		
	Dismissal Date	
Payments		
Maked		
<input type="button" value="N"/> <input type="button" value="<<"/> <input type="button" value=">>"/> <input type="button" value="New"/> <input type="button" value="Erase"/> <input type="button" value="Beam"/>		

Here you organize the information of its employees.

Expenses		Main
Place		
Date		
Expense Type		
Descriptive	\$	
<input type="checkbox"/> Reimbursed	<input type="checkbox"/> Paid	
<input type="button" value="N"/> <input type="button" value="<<"/> <input type="button" value=">>"/> <input type="button" value="New"/> <input type="button" value="Erase"/> <input type="button" value="Beam"/>		

Here you related expenses of the house.

Diary		Main
Date	<input type="checkbox"/> Updated	
Title		
<input type="button" value="N"/> <input type="button" value="<"/> <input type="button" value=">"/> <input type="button" value="New"/> <input type="button" value="Erase"/> <input type="button" value="Beam"/>		

Here you make your diary the house.

Taxes Main

Type

Tax

Adition \$

..... \$

Note Payment Date

.....

Warn Payment Date

Paid Restitution

(N) (<<) (>>) (New) (Erase) (Beam)

Here you organize the information of fees to be paid, e.g. Rate of garbage, etc. residential tax.

Gifts Main

Offer Gift |

Anniversary Colleague

Gift Relative

..... Friend

Gift Suggestions Value \$

.....

..... Remember

.....

(N) (<<) (>>) (New) (Erase) (Beam)

Here you organize the gifts that need to buy and give. Being remembered (visual warning - the palm start on the screen present and sound - beeps of palm) to buy or take.

<p>Subscribes Main</p> <p>Title</p> <p>Date Type ▼</p> <p>Company</p> <p>Phone</p> <p>\$ Parcels</p> <p>Note</p> <p>.....</p> <p>Warn Payment</p> <p><input type="checkbox"/> Paid <input type="checkbox"/> Cancelled</p> <p>(N) (<<) (>>) (New) (Erase) (Beam)</p>	<p>Subscribes Main</p> <p>Title</p> <p>Date Type ▼</p> <p>Company</p> <p>Phone</p> <p>\$ Parcels</p> <p>Note</p> <p>.....</p> <p>Warn Payment</p> <p><input type="checkbox"/> Paid <input type="checkbox"/> Cancelled</p> <p>(N) (<<) (>>) (New) (Erase) (Beam)</p>
--	--

Here you organizes information subscriptions to newspapers, magazines etc.

Reminders Main

Remember Date

Type

Remember the

.....

.....

Remembered Remember in

Remember Again

(N) (<<) (>>) (New) (Erase) (Beam)

Here you organize reminders, and remembered the day and time (visual warning - the the palm start on the screen present and sound - beeps of palm).

