

HANDCASE

HANDFLEET USER MANUAL

This manual is intuitive as ours softwares, observe the images to understand as to best and the more efficient use. The screens follow the logical order of the presentation of tools in the interface of each software.

Descriptive

Suite of 12 tools. With it he is easy and fast to manage and to control the fleet (automobiles, trucks, vans or bus etc) of its company or of third. For the biggest companies it serves as a mobile up to date complement. Structuralized in Description, Trips, Repair, Fuels, Tires, Inspection, Accidents, Insurances, Mileage/Kilometrage, Lubricant, Reports and It Schedules.

1.0 - PALM OS 3.5 or superior (ram 133 KB)

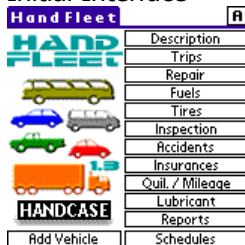
Instalation

Installation If you received the program for email, are enough to unpack zip in the work area and to give a double click in the archive Set **handfleet.prc** the tool of installation of its Palm will go to open presenting the archive to be synchronized, synchronizes and ready or in the next synchronization it will be installed. If you he bought the compact disc is enough to use the installer or to have access for the Windows Explorer the directories, to give a double click in the archive Set **handfleet.prc**, the tool of installation of its Palm will go to open presenting the archive to be synchronized, synchronizes and ready or in the next synchronization it will be installed.



You will recognize it for the icon to the side.

Initial Interface

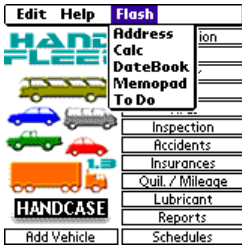


Here you choose the tool that she desires to use.

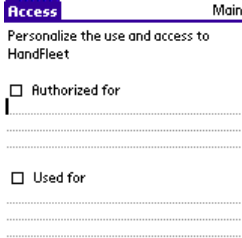


Menu standard, is enough to copy of the other tools and necklace information in the vice versa Handfleet.

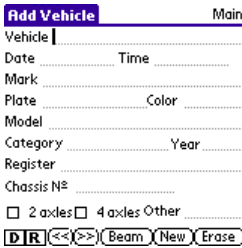
Obs.: You the information will be able to copy of the Memopad of its Palm all and to place in the HandFleet as well as copying of it and paste in the Memopad to use from the Palm Desktop. In the tools the button beam It facilitates the transference for another Palm that has the HandFleet installed of the information in each screen of each tool.



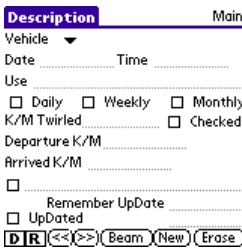
Here as in the screens of the other tools you choose in the menu and have access the tools standard of the Palm being able to you close it them to come back direct toward the HandFleet.



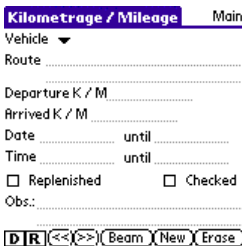
When click in the button **A** in the initial screen you it will be able to personalize its copy of the HandFleet with its name or another information that it judges useful as Workshop, concessionaire etc.



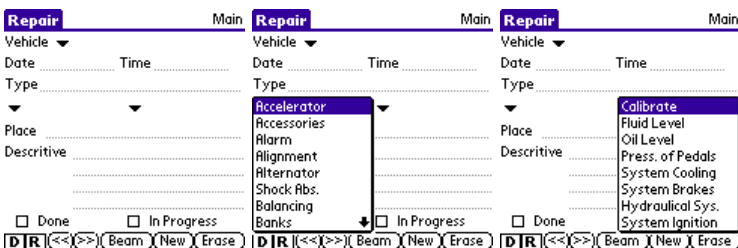
Here you organize the data of its vehicle (s). Visible in the screens of all the tools. The vehicle will be able to organize the information vehicle.



Here you organize the description of each vehicle.



Here you organize the information of based set of wheels of each vehicle in the kilometrage or mileage.



In the screens above you organize all the type of referring information the mechanics of each vehicle.

Loads Main

Vehicle

Customer

.....

Load Type

.....

Departure to

Arrived to

Note

.....

DIR << >> (Beam) (New) (Erase)

Here you organize loads.

Fuels Main

Vehicle

Date Time

Type

Place

.....

City

Q / M: Liters or Gallons

Reminder R\$

Restocking

DIR << >> (Beam) (New) (Erase)

Here you organize the supplying with reminder of new supplying.

Tires Main

Vehicle

Type

Date Time

Model

Hoop Series n°

Initial K/M Remember

End K/M Exchange

Obs.:

.....

DIR << >> (Beam) (New) (Erase)

Here you organize the information on the tires of each vehicle.

Inspection Main

Vehicle

Date Time

Type

.....

Actions Inspected

DIR << >> (Beam) (New) (Erase)

Here you organize the controls that to judge necessary in you inspect for vehicle.

Accidents Main

Vehicle

Date Time

Type

Description

Bulletin

Involved

.....

DIR << >> (Beam) (New) (Erase)

Here you organize the referring information the accidents for vehicle.

Insurances Main

Vehicle

Date Up to Dated

Type

Insuring

Policy N° In Day

Licensing

Obligator Insurance

Other

DIR << >> (Beam) (New) (Erase)

Here you organize the information on insurances of each vehicle.

