

# HANDCASE

## DOCTOR USER MANUAL

This manual is intuitive as ours softwares, observe the images to understand as to best and the more efficient use. The screens follow the logical order of the presentation of tools in the interface of each software.

### Descriptive

Suite of 6 medical tools for Palm to organize information regarding patients and appointments. You can sketch diagnostics and write your own library of symptoms and illnesses relating it to each patient.

### **1.5 - PALM OS 3.5 or superior (ram 83 KB)**

### Installation

Installation If you received the program for email, are enough to unpack zip in the work area and to give a double click in the archive Set **doctor.prc** the tool of installation of its Palm will go to open presenting the archive to be synchronized, synchronizes and ready or in the next synchronization it will be installed. If you he bought the compact disc is enough to use the installer or to have access for the Windows Explorer the directories, to give a double click in the archive Set **doctor.prc**, the tool of installation of its Palm will go to open presenting the archive to be synchronized, synchronizes and ready or in the next synchronization it will be installed.

You will recognize it for the icon to the side.



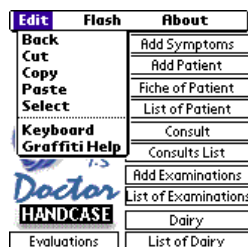
### Initial Interface



Here you choose the tool that she desires to use.

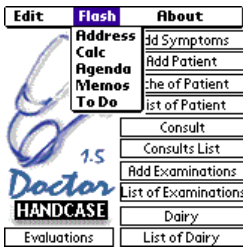
Suggestion: It adds Symptoms and or illnesses, later it adds the relation of patients.

Obs.: When a patient will have more than a symptom will choose to add and relates all the separate symptoms for one virgula between each symptom, will form the relation of symptoms presented in the menu dropdown in the screen Consultation.

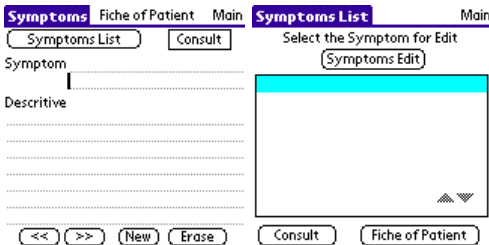


Here as in the screens of the other tools you choose in the menu the action option that to judge necessary.

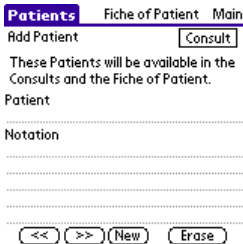
Obs.: You the information will be able to copy of the Memopad of its Palm all and to place in the Doctor as well as copying of it and paste in the Memopad to use from the Palm Desktop. In the tools the button beam. It facilitates the transference for another Palm that has the installed Doctor of the information of patients between colleagues.



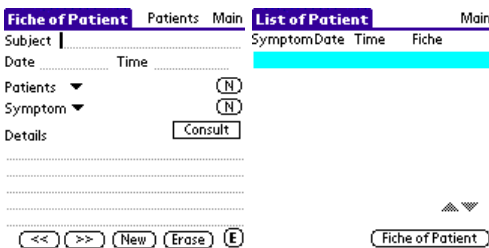
Here as in the screens of the other tools you choose in the menu and have access the tools standard of the Palm being able to you close it them to come back direct toward the Doctor.



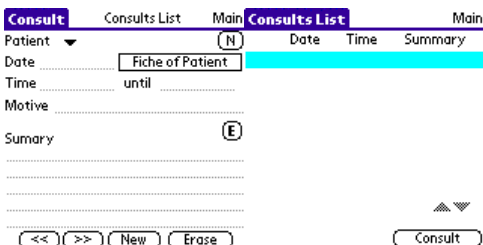
Here you store and organize symptoms and illnesses that will be applied the patient determined one. Obs.: When a patient will have more than a symptom will choose to add and relates all the separate symptoms for one virgula between each symptom, will form the relation of symptoms presented in the menu dropdown in the screen Consultation. In the second screen it appears the relation of Symptoms.



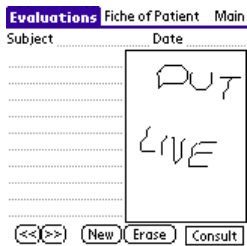
Here you add its patient previous, current and next.



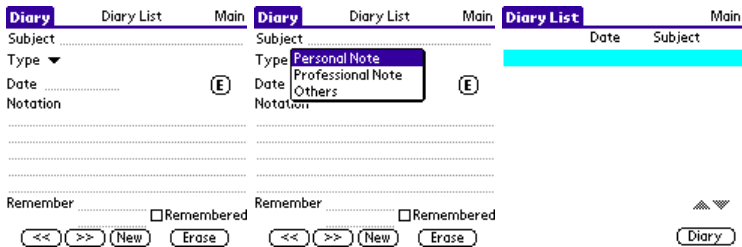
Here the Fiche of the Patient with the information of the consultations and its diagnosis. In the second screen you visualize the list of registered in cadastre patients.



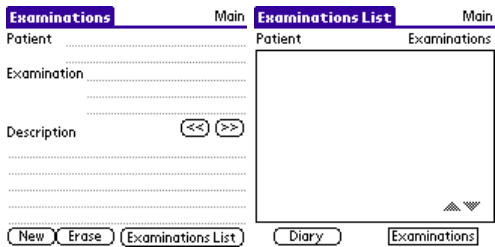
Here the consultation interface, in it you prepare the consultation of each patient. In the second screen you visualize the relation of consultations.



Here you it makes evaluations and sketches of the body for register and until showing its patient.



Here you register commentaries and notations that can be personal or professional. In the second screen the list of the Daily.



Here you register the examinations for its patients. In the second screen you visualize the list of examinations.

Any problem with Software enters in contact with HANDCASE [suporte@handycase.com](mailto:suporte@handycase.com)

**Access: [www.handycase.com](http://www.handycase.com)**

**© 2007 Copyright by HANDCASE**