

# HANDCASE

## DIAGNOSE USER MANUAL

This manual is intuitive as ours softwares, observe the images to understand as to best and the more efficient use. The screens follow the logical order of the presentation of tools in the interface of each software.

### Descriptive

Suite of 4 medical tools for Palm to organize diagnostics information. It includes sketches of skeleton and circulation system, male and female reproductive system and muscles. A powerful complement for our software Doctor.

### **1.0 - PALM OS 3.5 or superior (ram 188 KB)**

### Instalation

Installation If you received the program for email, are enough to unpack zip in the work area and to give a double click in the archive Set **diagnose.prc** the tool of installation of its Palm will go to open presenting the archive to be synchronized, synchronizes and ready or in the next synchronization it will be installed. If you he bought the compact disc is enough to use the installer or to have access for the Windows Explorer the directories, to give a double click in the archive Set **diagnose.prc**, the tool of installation of its Palm will go to open presenting the archive to be synchronized, synchronizes and ready or in the next synchronization it will be installed.



You will recognize it for the icon to the side.

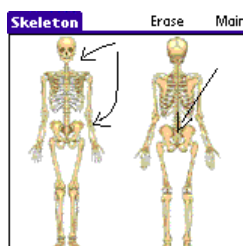
### Initial Interface



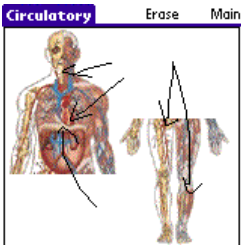
Here you choose the tool that she desires to use.

**Suggestion: It uses it to show to its customers and collaborators in the hour a rough draft of ideas for each plant.**

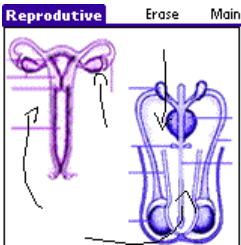
**Scratches dont save.**



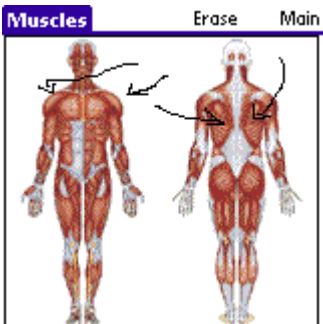
Here you sketch possible breakings or injuries.



Here you sketch possible blockages or injuries in the heart.



Here you sketch possible problems in the reproductive systems masculine and feminine.



Here you sketch possible muscular injuries.

Any problem with Software enters in contact with HANDCASE [suporte@handycase.com](mailto:suporte@handycase.com)

**Access: [www.handycase.com](http://www.handycase.com)**

**© 2007 Copyright by HANDCASE**