

HANDCASE

DENTIST USER MANUAL

This manual is intuitive as our softwares, observe the images to understand as to best and the more efficient use. The screens follow the logical order of the presentation of tools in the interface of each software.

Descriptive

Suite of 6 tools for Palm for dentists to organize and manage information of dental treatments. You can register dental treatments by sketching them as arches images teeth to be treat. It offers tool of reports.

1.0 - PALM OS 3.5 or superior (ram 168 KB)

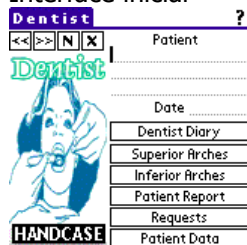
Instalation

Installation If you received the program for email, are enough to unpack zip in the work area and to give a double click in the archive Set **dentist.prc** the tool of installation of its Palm will go to open presenting the archive to be synchronized, synchronizes and ready or in the next synchronization it will be installed. If you he bought the compact disc is enough to use the installer or to have access for the Windows Explorer the directories, to give a double click in the archive Set **dentist.prc**, the tool of installation of its Palm will go to open presenting the archive to be synchronized, synchronizes and ready or in the next synchronization it will be installed.

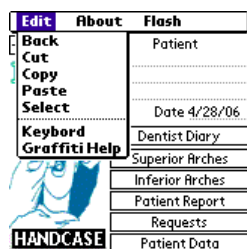


You will recognize it for the icon to the side.

Interface inicial

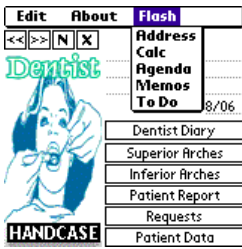


Here you choose the tool that she desires to use.



Here as in the screens of the other tools you choose in the menu the action option that to judge necessary.

Obs.: You the information will be able to copy of the Memopad of its Palm all and to place in the Dentist as well as copying of it and paste in the Memopad to use from the Palm Desktop. In the tools the button beam. It facilitates the transference for another Palm that has the installed Dentist of the information of patients between colleagues.



Here as in the screens of the other tools you choose in the menu and have access the tools standard of the Palm being able to you close it them to come back direct toward the Dentist.

Help Main **Help - 2ª Pg.** Back

The dentist is a intuitive software, of easy use.
 In the initial screen information of face of Patients are added one by one.

Important
 When using keyboard key X, you will exclude all the fiche of the Patient.

Initial Keys
 << Access Previous Patients
 >> Access Posterior Patients
 N New Patient
 X Exclude Patient
 ? Help

Dental arches
 In 2ªs pages of the tools you will be able to mark in the images the teeth that will have to be treated.

Doubts? It consults the manual.

2ª Page

Help – access top on the screen in ? icon.

Patient Data Main **Patient Data - 2ª Pg.** Back

Name
 Age | Sex M F
 Address
 PoBox
 Phone
 Email

Treatment Maintenance
 Private Accord
 Accord

Dental Characteristics

 Bruxism Sensitivity
 Other Type

Beam 2ª Page

Here you organize the information of its patients. In the second screen he complements the data.

Dentist Diary Main

Title Date

.....

<< >> (New Page) (Beam) (Erase)

Here you organize its personal commentaries.

Superior Arches Main **Superior Arches - 2ª Pg.** Back **Superior Arches - 2ª Pg.** Back **Superior Arches - 2ª Pg.** Back

Procedures

 Others

Concluded Beam 2ª Page

Here you establish the dental procedures. In the second and third screens you mark the teeth that they need to be treated in the superior arches. In the fourth screen when unmark a tooth for example is the one different mark signaling that that one was treated.

